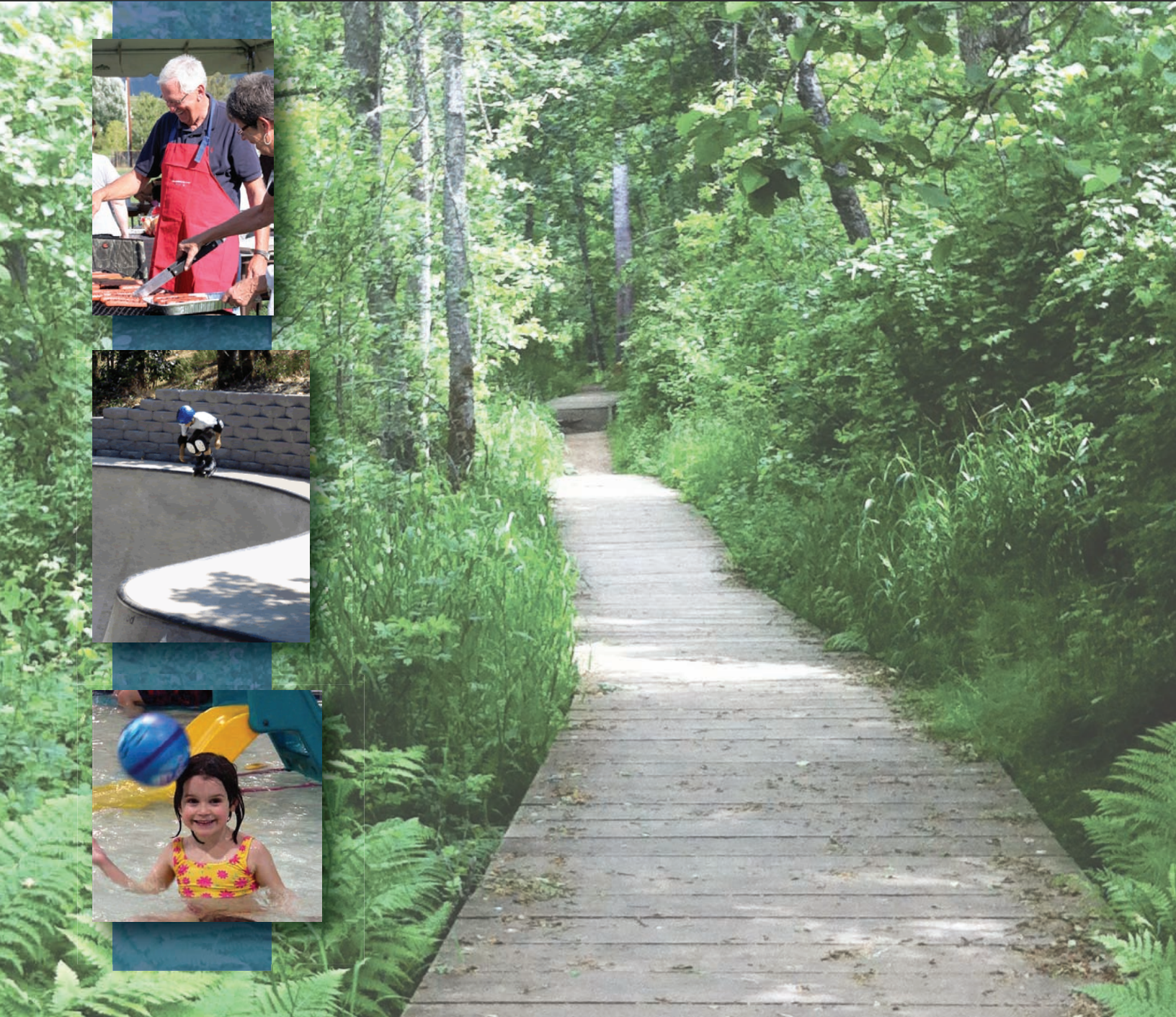


Hood River Valley Parks and Recreation District



Parks & Recreation Master Plan
2012 - 2022

ACKNOWLEDGEMENTS

The 2011 Hood River Valley Parks and Recreation District Board of Directors and staff played an integral role in this Plan's development.

2011 Board Members include:

Glenna Mahurin, President
Arthur Carroll, Director
Mark Zanmiller, Secretary
Karen Ford, Vice President
Renee van de Griend, Director

2011 Park District Staff:

Lori Stirn, District Director
Scott Baker, Assistant Director
Janelle Mudder, Aquatic Center Supervisor

The Hood River Valley Parks and Recreation District wishes to thank the individuals who participated in the public involvement components of this project. These include: interviewees, residents who attended the community workshop, participants of the Latino focus group, and respondents to the Community Survey.

In addition, the Park District wishes to thank their partners in the community who contributed to the identification of needs and development of goals and objectives for this plan. These partners include: the City of Hood River, Hood River County, the Port of Hood River, Hood River County School District, and The Next Door, Inc.

The University of Oregon's Community Planning Workshop guided the planning process and created the final Master Plan. The following people were involved with this Plan's development:

CPW Research Team:

Serena Parcell
Bryan Hayes
Lauren King
Maddie Phillips

Project Coordinator:

Kristina Koenig

Faculty Advisor:

Bethany Steiner



EXECUTIVE SUMMARY

Hood River Valley Parks and Recreation District Master Plan

Introduction

The Hood River Valley Parks and Recreation District (the Park District) has prepared this 2012 Master Plan to provide a ten-year action plan for development, management, and continued improvement of its parks and recreation facilities. This 2012 Master Plan is an update to the Park District's 2005 Capital Facilities Master Plan.

This Master Plan includes the following:

- A summary of Park District planning area demographics
- An inventory of existing park and recreational facilities in the Park District's planning area, including those owned by partner agencies
- A parks and recreation needs analysis based on community surveys and outreach activities
- Goals and objectives to guide the Park District in developing new projects over the next 10-years

Overview

The Park District's planning boundary includes all of Hood River County, except Cascade Locks. The Park District is one of several park service providers within this boundary. The other major park service providers within the boundary are the City of Hood River, Hood River County, the Port of Hood River, the Hood River Valley School District, Oregon State Parks, and the U.S. Forest Service. These numerous and varied agencies offer a wide range of parks and recreational facilities for the community and visitors, as well as opportunities for partner relationships with the Park District.

The quality and breadth of outdoor recreation activities within the boundaries of the Park District, including water sports in the Columbia River Gorge and trail activities in wilderness areas, draw numerous outdoor adventure enthusiasts to the region, both as visitors and as new permanent residents. The Park District seeks to enhance the parks and recreation facilities for community residents in order to enhance the quality of life in the Hood River Valley, and thereby contributing to its economic vitality.

Parks and Recreation Needs Analysis

This 2012 Master Plan includes an assessment of community needs based on local demographic trends, a bilingual mail-in household survey, a community workshop, a Latino focus group, and stakeholder surveys. The community outreach activities resulted in the following key findings:

- High satisfaction with the quality of current parks and recreation facilities
- Strong demand for new sports fields
- A desire for park improvements, including picnic areas, tennis courts improvements, and indoor recreation spaces
- An overall consensus on the prioritization of maintenance, with an accompanying need for prioritized allocation of funding
- Interest in trail development and connectivity between key community facilities
- A need for improved community relations to increase public awareness of the recreation roles of the Park District and other agencies, and of the challenges of funding maintenance of new facilities

Mission, Guiding Principles, Goals, and Objectives

The Park District's 10-year vision for parks and recreation within the planning area is guided by the Park District's Mission, and will be achieved through guiding principles, goals, and objectives that were created through the parks planning process. The mission, guiding principles, and goals are provided below. Objectives and additional details are presented in Chapter 5 of the Master Plan.

Mission: *“The Mission of the Hood River Valley Parks and Recreation District is to provide recreational opportunities to the citizens of the Park District, with focus on the youth of our community. Facilities and programs will be developed and maintained to provide safe and economical recreational environments for all users.”*

Guiding Principles: Guiding principles summarize the values and priorities of the Park District. All goals and objectives must be consistent with these guiding principles. The guiding principles for the 2012 Master Plan are:

- The Park District’s main, ongoing priority is the operation and maintenance (O&M) of the Aquatic Center, and this prioritization will be reflected in annual operating budget allocations.
- The Park District will maintain its inventory of other existing facilities, including the skate park, the trail system, and community and neighborhood parks, and O&M budget allocations for these facilities will not be superseded by budget needs for new projects.
- The Park District will develop new parks and recreation facilities to serve a diverse range of residents within the Park District, and will implement such projects in a fiscally responsible manner.
- The Park District will capitalize on new opportunities as they arise even if not specifically identified in the Master Plan.
- The Park District will foster and maintain good relationships with partner agencies to coordinate planning, development, and O&M efforts, and to maximize local recreation resources.

Goals and Objectives: The Park District seeks to accomplish the following goals for new or enhanced parks and recreation facilities within the 10-year time frame of the 2012 Master Plan:

Goal: Aquatic Center

Evaluate options for improvement to the Aquatic Center to maintain its status as a state-of-the-art aquatic facility.

Objectives:

- In addition to maintaining the aquatic facility, improvements in energy efficiency, safety, employee training, customer satisfaction, etc will be prioritized.
- Options for end-of-life structure upgrades/replacement, and pool sanitizer upgrade will be studied.

Goal: Sports Facilities

Utilize partnerships to develop and improve sports fields and courts to meet the evolving demand of the community.

Objectives:

Lead efforts to:

- Develop new sports-fields for soccer and lacrosse
- Implement long term community goal of a baseball/softball complex
- Ensure needed public sport-courts are available
- Study the feasibility of an indoor soccer/sport facility

Goal: Trails

Continue to develop multi-use trails that provide users safe opportunities to recreate and to connect to major destinations throughout the greater Hood River Valley.

Objectives:

- Improve trail connectivity with the completion of missing links in the existing trail networks, including:
 - Rotary Skate Park to Waterfront Trail (in conjunction with partners)
 - Segment two of Indian Creek Trail
 - The Westside Community Trail connection from the Skate Park to Westside School
 - The Indian Creek Trail extension from the High School through the Barrett Park property
 - Hood River/Powerdale dam trail with connection to east end of Indian Creek Trail (in conjunction with partners)
- Partner with the School District, the City, and the County to create safe routes to school for children
- Include signage and, where appropriate, parking and restrooms at trailheads facilities
- Work with partners to improve trail connectivity between public facilities, parks and open space
- Partner with Hood River City and County to implement existing transportation plans

Goal: Parkland Development

Develop and maintain quality parks distributed throughout the Hood River Valley that provide for a diverse range of recreational opportunities.

Objectives:

- Provide or improve picnic shelters, picnic tables, bathroom facilities, signage and parking at existing parks
- Complete Barrett Community Park
- Work with partners to provide more public access to the Columbia and Hood Rivers: including, but not limited to, the Punchbowl and Powerdale properties
- Include designated dog park areas in existing or new parkland

District Funding

The Park District currently obtains capital funds for new or expanded facilities primarily from System Development Charges¹ and public grants, while operation and maintenance funds are obtained primarily from property taxes and user fees. SDCs and grant money cannot be used for operation and maintenance expenses. The property tax assessment for the Park District was originally planned in 1988 to fund the operation and maintenance of the Aquatic Center. While the role of the Park District has gradually increased to meet a variety of community parks and recreation needs, the property tax assessment rate has remained constant. As a result, the operation and maintenance costs associated with new parks and recreation facilities present a challenge to the Park District and its ongoing commitment to operation and maintenance of the Aquatic Center.

Achievement of the Park District's goals and objectives will require additional sources of funding, both for development and operation and maintenance of new facilities. The Park District will need to pursue a variety of short-term and long-term funding strategies to fulfill its park system goals. Coordination with partner agencies will facilitate successful future implementation of one or more of these funding strategies. Potential funding strategies are identified in Appendix C of the Master Plan.

¹ SDCs are fees assessed on new residential construction intended to provide additional capacity for parks and recreation facilities for community population increases associated with development.

TABLE OF CONTENTS

INTRODUCTION	1
COMMUNITY PROFILE	3
2.1 Regional Context and Planning Area.....	3
2.2 Demographic Analysis	3
2.3 Summary	6
PARK INVENTORY	7
3.1 Planning Area.....	7
3.2 Parks Inventory and Classification	7
3.3 Summary: Hood River Valley Parks.....	19
PARKS AND RECREATION NEEDS ANALYSIS	20
4.1 Key Findings from Public Involvement	20
4.2 Research from SCORP	21
PARK DISTRICT MISSION AND GOALS	24
5.1 Park District Mission.....	24
5.2 Guiding Principles	24
5.3 Goals And Objectives	25
5.4 Implementation	26

APPENDIX A: MAPS

APPENDIX B: PARK CLASSIFICATIONS

APPENDIX C: PARK DISTRICT FUNDING

APPENDIX D: PUBLIC PARTICIPATION

INTRODUCTION

This Master Plan provides a 10-year vision for the Hood River Valley Parks and Recreation District (also referred to as the Park District). This chapter describes the purpose of the Master Plan, the process under which it was created, and its organization.

1.1 Purpose of Update

This planning document is an update of the 2005 Capital Facilities Master Plan created by the Hood River Valley Parks and Recreation District. Since the 2005 planning process, the Park District has made progress on many of its previous goals:

- Completion of the skate park development plan at Rotary Park
- Contributing partner to the completion of Phase I of the Waterfront Park development
- Addition of a key neighborhood park in Odell
- Acquisition of the Barrett Community Park property
- Completion of the Aquatic Center landscaping
- Addition of outdoor/sand volleyball at Oak Grove Park
- Addition of a Disc Golf Course at Morrison Park
- Progress on Indian Creek Trail, including access and safety improvements; installation of a bridge to provide ADA access at the Columbia Gorge Community College campus; and obtaining a Conditional Use Permit on Barrett park property for expansion of the trail
- Progress towards new Westside Community Trail development, including securing of permanent easements and acquisition of grant funds to facilitate development.

1.2 About the Hood River Valley Parks and Recreation District Master Plan

The Hood River Valley Parks and Recreation District Master Plan (The Master Plan or the Plan) describes the Park District's mission and provides specific tools and components necessary to achieve that mission. Specifically, the analysis completed to create the Plan is:

- An analysis of US Census data for the Park District

- An inventory of existing park and recreational facilities in Park District planning area, including those owned by Park District partners
- A parks and recreation needs analysis based on extensive resident involvement—including community workshops, stakeholder interviews, a Latino focus group, and a community survey
- Goals, guiding principles, and objectives to guide the Park District for the next 10-years
- A funding analysis of the Park District.

The Plan will be reviewed every five years and revised, as appropriate, to ensure that the Plan continues to be a relevant planning tool for the Park District.

1.3 Relationship to Other Plans

The following documents have bearing on the current parks planning process and have been considered during the creation of this Parks Plan:

- City of Hood River’s Community Survey, conducted in 2005/2006
- City of Hood River’s Comprehensive Plan (updated 2006)
- Health Needs Assessment for the Latino Community, conducted by Nuestra Comunidad Sana in 2008
- Hood River Valley Parks and Recreation Capital Facilities Master Plan (updated in 2005)
- Oregon Trails 2005-2014: A Statewide Action Plan
- Statewide Comprehensive Outdoor Recreation Plan (SCORP) (2008)

1.4 The Parks Planning Process

This Plan combines community input with technical analysis to provide a framework for achieving goals and objectives that implement the community park system mission.

The Park District’s planning process for the Master Plan relied heavily on the input and suggestions of residents and stakeholders in the community. The Park District contracted with Community Planning Workshop (CPW), a University of Oregon based program, to facilitate this process. CPW used four primary methods for gathering input from the community: (1) a household survey distributed to randomly selected Hood River Valley residents, (2) stakeholder interviews, (3) a Latino focus group, and (4) a community workshop.

COMMUNITY PROFILE

The parks planning process involves identifying current community needs and predicting future trends. Since people use parks differently, understanding community demographic characteristics and trends can help to ensure that parks best fit the diverse needs of varied populations.

2.1 Regional Context and Planning Area

The Hood River Valley Parks and Recreation District (Park District) boundary includes all of Hood River County, Oregon except for the small community of Cascade Locks (population 1,144)¹, located in the northwest corner of the county (MAP 1) The planning boundary is 530 square miles² and includes 21,202 people³, creating a population density of 40 people per square mile.

2.2 Demographic Analysis

This section is a demographic analysis conducted for Hood River County using data from the 2010 Census.

POPULATION TRENDS

Assuming that current population trends continue, teenage and senior populations will increase as the youth and middle age groups get older.

Hood River County houses 22,346⁴ of the 3.8 million people living in the State of Oregon (0.6%). Its population has grown just under 10% since the 2000 Census, nearly keeping pace with the state's population growth. The population distribution

¹ 2010 U.S. Census.

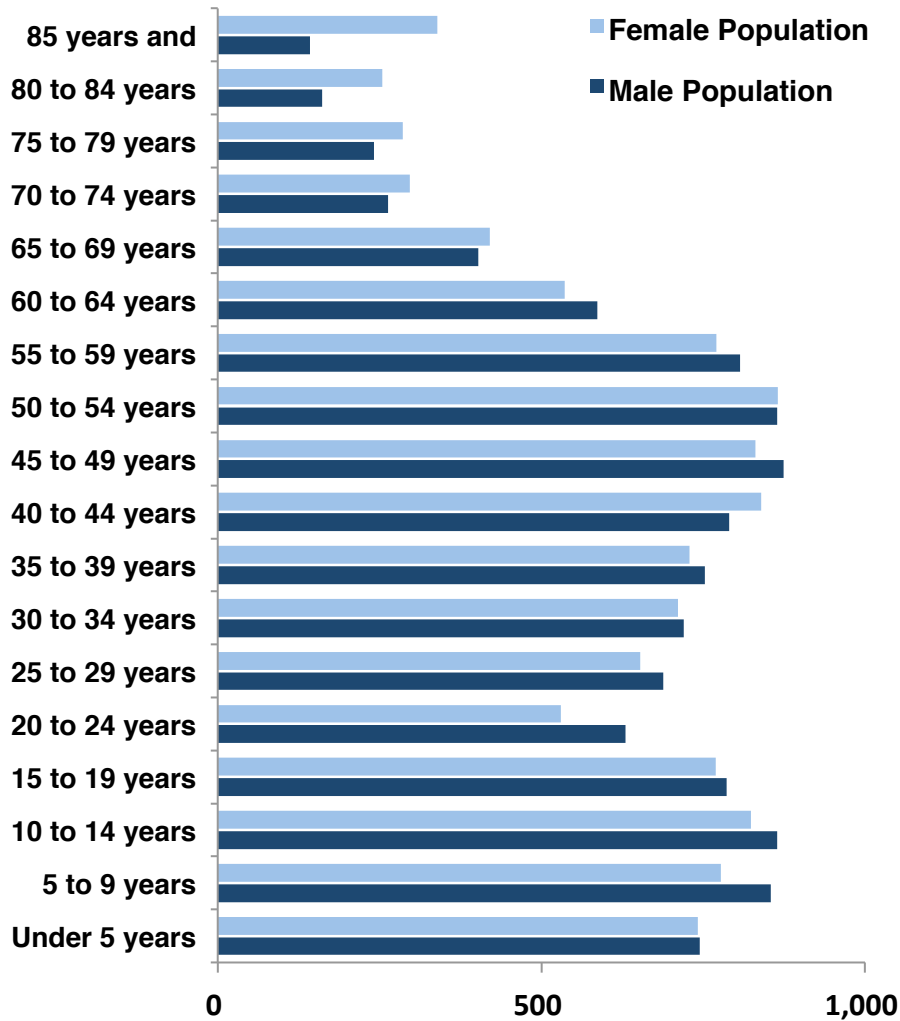
² Area information came from GIS data provided by Hood River County. The boundary excludes the 3.22 square miles of Cascade Locks.

³ 2010 U.S. Census Data for Hood River County minus the population of Cascade Locks.

⁴ The 1,144 residents of Cascade Locks are included in this analysis even though they are not technically included within the Park District planning boundary. Comprising of only 5% of the county's population, it is unlikely that this inclusion has altered the demographic results significantly.

by age and gender is presented in Figure 2-1. Based on the large number of young people under the age of fourteen, as well as a sizable population of people between the ages of forty and fifty-nine, and barring any other factors that affect population distribution (i.e., transfers in and out of the area), there will be many more teens and senior citizens to plan for over the next ten to fifteen years.

Figure 2-1. Hood River Population Age Distribution by Gender



Source: U.S. Census Bureau, 2010

HOUSEHOLDS WITH CHILDREN

Hood River Valley has a slightly higher than average percent of households with children.

There is a higher rate of households with individuals under the age of eighteen in Hood River County than in the state of Oregon. A total of 36% of the residents in the county have youth under the age of 18, while the average for the entire state of Oregon is only 30%.

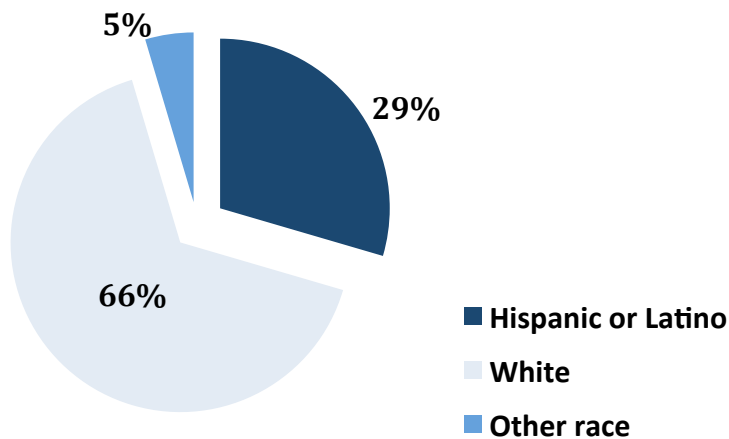
ETHNICITY

A large percentage of the county's population is Latino.

According to the Portland State Population Research Center, Hood River County is one of the top five counties in the state with highest percentages of Latino populations.⁵ The Oregon State Department of Education reports that 46% of students within the school district identify as Hispanic.⁶

As seen in Figure 2-2, Latinos represent nearly one third (29%) of the ethnic mix of Hood River County, more so than all other ethnicities combined, with the exception of Caucasians. Over 93% of the Latinos identified being of Mexican origin.

Figure 2-2. Ethnic (Racial) Mix of Residents in Hood River County



Source: U.S. Census Bureau, 2010.

RECREATION

Recreational opportunities draw tourists to the Hood River area.

With such rich amenities as the Columbia River Gorge and Mt. Hood, it is no surprise that seasonal population increases occur in Hood River County. When looking at marketable trips⁷ to the region, Hood River County received 9% more trips than the average for the state of Oregon. As indicated in Figure 2-3, the

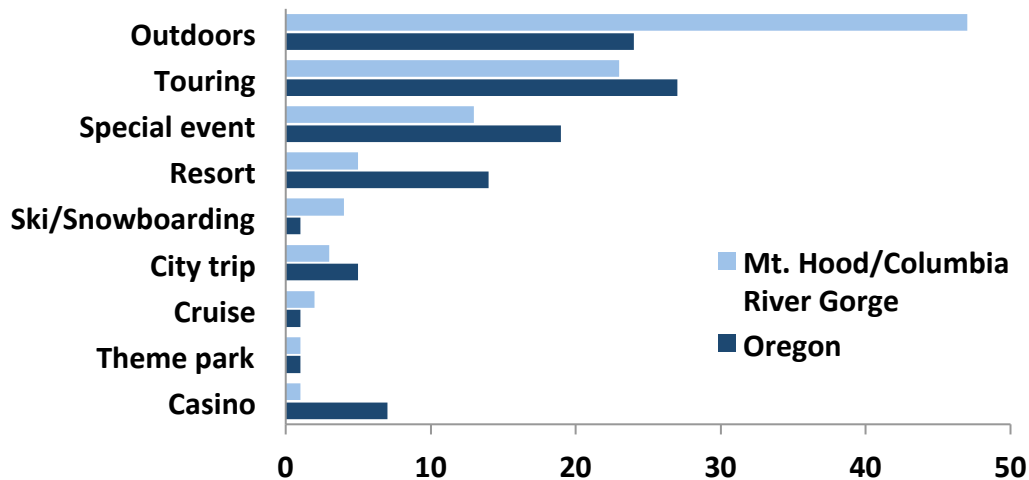
⁵ Portland State University, Population Research Center website, <http://pdx.edu/prc/>

⁶ Oregon State Education Department, Fall Membership Report 2010-2011, <http://www.ode.state.or.us/search/page/?=3225>

⁷ Longwood International considers marketable *trips* as trips to an area for reasons other than personal business or family visits.

majority of the marketable trips to the area are for outdoor activities, far surpassing the proportion of such trips in the state as a whole.

Figure 2-3. Average Main Purpose of Marketable Trips to Hood River Area vs. Oregon State



Source: Longwoods International Study, 2009 for Travel Oregon

2.3 Summary

Hood River County's population growth has a direct impact on the future park system. Increasing population means that the region will possibly require more park facilities and parkland to meet community needs as it grows. Youth and elderly populations have different active or passive park needs and racial and ethnic groups have different cultural park uses and needs as well. Identifying and addressing diverse types of community needs can begin to establish the framework for a park system that is enjoyed and utilized by all residents.

According to the above demographic analysis for Hood River County, the following assumptions can be made for the Park District:

- **It should begin to anticipate the needs for the likely increasing teenage and senior populations.**
- **It should consider the needs of households with children.**
- **It should consider the needs of the expanding Latino population.**
- **It should consider the opportunities presented by the seasonal recreational tourists drawn to the Park District.**

PARK INVENTORY

Hood River Valley Parks and Recreation District works with partnering agencies to provide parks and recreation services within the Park District. This chapter includes a list of the parks providers in the Park District and the facilities that they provide. Appendix A includes numerous maps that show the spatial distribution of these facilities.

3.1 Planning Area

Hood River Valley Parks and Recreation District is located on the northern edge of the Oregon border, adjacent to the northern foothills of Mt. Hood and the southern shoreline of the Columbia River. The Park District boundary is approximately 40 miles east of Portland, connected by Highway 30/Interstate 84, which heads east-west through the northern portion of the county. The Hood River, a tributary to the Columbia River, runs south-north along the eastern edge of the City of Hood River.

3.2 Parks Inventory and Classification

A critical step in parks planning is identifying how much parkland exists, where parks are located, and what facilities and amenities parks provide. The Park District has numerous partners that provide parks and recreation services and facilities within the Park District; these include the [City of Hood River](#), [Hood River County](#), [the Port of Hood River](#), [the Hood River County School District](#), along with a few other private/public landowners or agencies. (See Appendix A for maps of parks in the district.)

Table 3.2 identifies parks and facilities provided by each partner, along with information about size, location, and amenities. The acreages provided for each agency include properties they either own or maintain through an intergovernmental agreement.

The parks are categorized into the following classification types: Neighborhood Parks, Community Parks, Regional Parks, Special Use Parks, Trails, Public Schools, Open Space & Waterfront, and Undeveloped Parkland. Definitions of these park classifications are listed in Appendix B.

HOOD RIVER VALLEY PARKS & RECREATION DISTRICT

The Park District currently owns five parks and maintains an additional three parks, totaling 44.3 acres of parkland. These parks include three neighborhood parks, three special use parks, and two community parks. Five of the eight parks

are located within the Hood River City limits, one is in Odell and the remaining two are located just outside the City of Hood River on county land (see Table 3-1, Appendix A: Maps 2 & 6).

Trails

The Park District also owns and maintains one trail system, Indian Creek Trail (see Appendix A: Map 6). The first and third segments of the trail are complete and the second (middle) segment is proposed and awaiting easement access from current landowners. When complete, the trail will extend from E. 3rd Street to Hood River Valley High School. Since 2005, a trail extension has been approved through the newly acquired Barrett Park Property, which would extend the trail an additional 0.5 miles from the Hood River Valley High School to Barrett Drive.

Westside Community Trail, a proposed trail from Rotary Skate Park to Westside School, will add another 1.4 miles of trail to the Park District trail inventory. This trail's development is currently in progress.

Maintenance and Improvements

The Park District acquired two new properties since the adoption of the 2005 Capital Facilities Plan: Odell Neighborhood Park and Barrett Community Park. The acquisition of these two parks makes up 94% of the Park District's total current parkland acreage. Barrett Park is currently the only undeveloped parkland owned by the Park District. The Park District is currently seeking funding for the development of this property.

As noted above, the Park District assists partnering agencies by maintaining and improving additional facilities. Through intergovernmental agreements the Park District funded the development and currently maintains the following parks and trails:

- Rotary Skate Park (2.93 acres)
- Morrison Disc Golf Course (4.78 acres)
- Oak Grove Park sand volleyball courts (less than 0.1 acres)
- Indian Creek Trail crossing property owned by a number of government and private entities (3.3 miles of linear trail easements)

In addition to providing maintenance and improvements to these facilities, the Park District has provided funding for various park improvements since 2005. Additional details on funding are in Chapter 6. The following is a list of contributions the Park District has made for park improvements since 2005:

- Sand volleyball courts and other improvements at the County's Oak Grove Park
- The completion of the skate park at Rotary Park
- A \$200,000 contribution for capital improvements at the City of Hood River Waterfront Park
- A \$10,000 annual contribution of System Development Charges (SDCs) for the improvement of City of Hood River parks

Table 3-1. Park District Owned and/or Maintained Parks and Facilities

Park Name	Park Type	Location	Acres/Miles	Amenities & Comments
Culbertson Park	Neighborhood	S. Pacific and 5th	0.72 ac.	Picnic tables, benches, play structures, half basketball court
Hazelview Park	Neighborhood	1711 Heritage Loop	0.43 ac.	Picnic tables and open space
Odell Park	Neighborhood	Tamarack	1.83 ac.	Development is in progress. Play structures, paths and plantings are in place
Total for Neighborhood Parks:			2.98 ac.	
Indian Creek Trail	Trail	Third-Hazel St. to HRVHS	3.3 mi.	3.3 miles soft-surface trail
Total for Trails:			3.3 mi.	
Aquatic Center	Special Use	1601 May St.	1.35 ac.	Parking, restrooms, locker rooms, 25 yd recreation pool, therapy pool, wading pool, slide, rope swing
Morrison Disc Golf Park	Special Use	Wasco and 20th	4.78 ac.	City owned, Park District improved and maintained: Picnic tables, natural area, disc golf course, adjacent to skate park w/bathroom facilities
Rotary Skatepark (Jaymar)	Special Use	Cascade Ave., HR	2.93 ac.	City owned, Park District improved and maintained: Picnic shelter, benches, restroom, play structure, natural area, skate park, BMX park
Total for Special Use Parks:			9.06 ac.	
Barrett Park	Community	4010 Barrett Drive	32.16	Currently undeveloped with house and barn on property
Oak Grove Sand Volleyball Courts	Community	Co. Club Rd. and Portland Dr.	~ 0.1 ac.	County owned, Park District maintains the sand volleyball courts
Total for Community Parks:			32.26 ac.	

Table 3-2. Parks and Trails in the Hood River Valley

Facility	Type	Location	Acres ¹ / Miles ¹	Ownership						Amenities
				District	City	County	Port	State/Fed	Other	
Culbertson Park	Neighborhood	S. Pacific and 5th, HR	0.72 ac.	X						Picnic tables, benches, play structures, half basketball court
Hazelview Park	Neighborhood	1711 Heritage Loop, HR	0.43 ac.	X						Picnic tables and open space
Odell Park	Neighborhood	Tamarack, Odell	1.83 ac.	X						Development is in progress. Play structures, paths and plantings are in place
Coe Park	Neighborhood	Montello St. and 13th St., HR	0.33 ac.		X					Half basketball court
Friendship Park	Neighborhood	Taylor and 18 th , HR	0.9 ac.		X					Picnic table, open space, helicopter landing pad for medical transport
Mann Park	Neighborhood	Eugene and 24th, HR	0.86 ac.		X					Play structures
Montello Park	Neighborhood	30th and Montello, HR	0.28 ac.		X					Benches, play structure, half basketball court, picnic area
Tsuruta Park	Neighborhood	State and 12th, HR	1.01 ac.		X					Picnic tables, play structure
Wilson Park	Neighborhood	May St. and 2nd St., HR	1.05 ac.		X					Play structure and open space

(cont.) Table 3-2. Parks and Trails in the Hood River Valley

Facility	Type	Location	Acres/ Miles	Ownership						Amenities
				District	City	County	Port	State/Fed	Other	
Ruthton Park	Neighborhood	I-84, W of HR	1.5 ac.			X				Picnic tables, overlook, river view
Bowe Addition	Neighborhood	Belmont Rd., HR	0.4 ac.						X	Play structure, open space
Georgiana Smith Park	Neighborhood	Oak and 5th, HR	0.5 ac.						X	Benches, overlook
Horizon Christian School	Neighborhood	Hood River	8.39 ac.						X	Soccer fields, open space for informal play, play structures. Fee based public use.
Barrett Park	Community	4010 Barrett Drive, SW of HR	32.16 ac.	X						Currently undeveloped with house and barn on property
Collins Fields	Community	13th and May St., HR	2.6 ac.		X					Baseball fields
Children's Park	Community	9th and Eugene St., HR	1.24 ac.		X					Parking, picnic tables, picnic shelter, restrooms, open space, play structure, covered full basketball court
Jackson Park	Community	13th and May St., HR	2.5 ac.		X					Parking, picnic tables, restrooms, open space, play structure, tennis courts, bbq pit, amphitheater
Tsuruta Tennis Courts	Community	13 th and May St HR	1.1		X					Tennis courts, adjacent to the aquatic center

(cont.) Table 3-2. Parks and Trails in the Hood River Valley

Facility	Type	Location	Acres/ Miles	Ownership						Amenities
				District	City	County	Port	State/Fed	Other	
Panorama Point	Community	Eastside Rd. HR	11.5 ac.			X				Picnic tables, picnic shelter, benches, restroom, overlook
Oak Grove Park	Community	Co. Club Rd. and Portland Dr. HR	2.5 ac.			X				Parking, picnic table, benches, restroom, play structure, tennis courts, barbeque pit, natural area, shelter, sand volleyball
Marina Park, Marina Green	Community	Hood River Marina, HR	19 ac.				X			Picnic shelter, restrooms, waterfront access, parking, boat launch, open space
St. Mary's Catholic Church	Community	Hood River	11.73 ac.						X	Softball fields, little league ball fields, soccer field, fee based public use
Waterfront Park	Regional ⁸	Portway Ave. HR	6.4 ac.		X					Picnic tables, benches restrooms, waterfront, play structure, multi-use path
Kingsley Reservoir	Regional	Kingsley Rd., Binns Hill Rd.	320 ac.			X				Parking, restrooms, waterfront, campsites, natural area, boat ramp

⁸ The Park District and City of Hood River have classified Waterfront Park as a regional park because its location and planned amenities within the park are expected to continue to attract visitors from outside the local community.

(cont.) Table 3-2. Parks and Trails in the Hood River Valley

Facility	Type	Location	Acres/ Miles	Ownership						Amenities
				District	City	County	Port	State/Fed	Other	
Tucker Park	Regional	Hwy 281 past Dee	35.5 ac.			X				Parking, picnic tables, picnic shelter, benches, restrooms, waterfront, play structure, campsites, natural area, fishing, camping, shower houses
Tollbridge Park	Regional	Parkdale	84 ac.			X				Parking, picnic tables, picnic shelter, benches, restroom, waterfront, play structure, camp sites, natural area, RV camping, horseshoe pits, showers
Routson Park	Regional	Hwy 35, S. of Parkdale	168 ac.			X				Parking, restrooms, campsites, natural area, Hood River frontage
Kinnikinnick Campground	Regional	10 miles South of Parkdale	104 ac.					X		Campground (12 sites) is 5 acres of total area, fishing and boating access on Laurance Lake, no facilities
Lost Lake	Regional	14 miles SW of Dee	290 ac.					X		Camping, picnic area, hiking trails, fishing, boating (non-motorized), views

(cont.) Table 3-2. Parks and Trails in the Hood River Valley

Facility	Type	Location	Acres/ Miles	Ownership						Amenities
				District	City	County	Port	State/Fed	Other	
Columbia Gorge National Scenic Area	Regional	Columbia River Corridor	33,856 ac.					X		Trails, river access, camping, scenic views, trails
Badger Creek Wilderness Area	Regional	SE corner of HR County	14,490 ac.					X		
Mark O. Hatfield Wilderness Area	Regional	NW HR County	46,437 ac.					X		
Mt Hood Wilderness Area	Regional	N side of Mt Hood	27,554 ac.					X		
Nottingham Campground	Regional	7 miles South Mt. Hood off Hwy 35	10 ac.					X		Campsites (20), waterfront access
Sherwood Campground	Regional	8 miles South Mt. Hood off Hwy 35	3.5 ac.					X		Picnic sites (4), campsite (14), hiking trails, ADA access, waterfront access
Aquatic Center	Special Use	1601 May St. HR	1.35 ac.	X						Parking, restrooms, locker rooms, 25 yd recreation pool, therapy pool, slide, rope swing
Morrison Disc Golf Park	Special Use	Wasco and 20th HR	4.78 ac.	X						Picnic tables, natural area, disc golf course, adjacent to skate park w/bathroom facilities
Rotary Skatepark (Jaymar)	Special Use	Cascade Ave. HR	2.93 ac.	X						Picnic Shelter, benches, restroom, play structure, natural area, skate park, BMX park

(cont.) Table 3-2. Parks and Trails in the Hood River Valley

Facility	Type	Location	Acres/ Miles	Ownership						Amenities
				District	City	County	Port	State/Fed	Other	
Memorial Overlook Park & Stratton Gardens	Special Use	2nd and Sherman, HR	0.2 ac.		X					Benches, overlook, fountain, gardens
Parkdale Hutson Museum	Special Use	Parkdale	3.5 ac.						X	Parking, picnic tables, picnic shelter, museum building
Waucoma Park	Open Space and Waterfront	9 th and Montello HR	0.71		X					Natural area, replanted in 2009
Event Site	Open Space and Waterfront	Waterfront at 2 nd St. HR	5.5 ac.				X			Windsurfing and kiting, rigging yard, restroom, kayaking, waterfront access
Spit	Open Space and Waterfront	West of mouth of Hood River HR	4.7 ac.				X			Portable toilets, fishing, waterfront access, kiteboarding and wind surfing
Hook	Open Space and Waterfront	West end of Portway Ave HR	3.8 ac.				X			Gravel road, parking, seasonal portable toilets (4), waterfront access used for fishing, windsurfing, and kite boarding, walking trail connects to Waterfront Park and the Event Site
Marina/Boat Basin	Open Space and Waterfront	Hood River Marina HR	26.6 ac.				X			Much of acreage is water, moorage slips, boat launch, restroom, fuel service, docks
Sherman Triangle	Undeveloped	Sherman Ave. and 13th HR	0.06 ac.		X					Plantings
Indian Creek Park	Undeveloped	Wilson St. and 10th HR	4.6 ac.		X					Natural area, undeveloped and unmaintained

(cont.) Table 3-2. Parks and Trails in the Hood River Valley

Facility	Type	Location	Acres/ Miles	Ownership						Amenities
				District	City	County	Port	State/Fed	Other	
Morrison Park	Undeveloped	North of I-84 HR	5.76 ac.		X					Natural area, undeveloped and unmaintained
Elliot Park	Undeveloped	8 th . South of Indian Creek HR	11.9 ac.		X					Natural area, undeveloped and unmaintained
Island	Undeveloped	Inside the Hook HR	4.5 ac.				X			Only accessible by boat, undeveloped
Sandbar (Delta)	Undeveloped	North of Spit HR	55 ac.					X		Walking loop
Wells Island	Undeveloped	West of Hood River waterfront HR	53.3 ac.					X		Waterfront, maintained by USFS, natural area
Dimmick Park	Undeveloped	Parkdale	6.8 ac.					X		Along Hood River, will remain undeveloped
Hood River High School	School District	Hood River	35 ac.						X	Baseball field, football field, open space for informal play, batting cages. Includes adjacent Golden Eagle Park property.
Hood River Middle School	School District	Hood River	5.5 ac.						X	Football field, track, amphitheater, greenhouse and gardens, gym (indoors)
Parkdale Elementary	School District	Parkdale	5 ac.						X	Baseball field (2), tennis courts (2), informal soccer field, track, play structures, covered play area with basketball hoops, gym (indoors).

(cont.) Table 3-2. Parks and Trails in the Hood River Valley

Facility	Type	Location	Acres/ Miles	Ownership						Amenities
				District	City	County	Port	State/Fed	Other	
Pine Grove Early Childhood Development	School District	Pine Grove	2.5 ac.						X	Baseball fields (2), play structures (for young children), covered play area with basketball hoops, gym (indoors)
May St. Elementary	School District	Hood River	2.5 ac.						X	Baseball fields (2), open fields for informal play, covered play area with basketball hoops, play structures, gym (indoors).
Mid-Valley Elementary	School District	Odell	7.75 ac.						X	Baseball fields (2), informal soccer field, covered play area with basketball hoops, play structures, gym (2, indoor)
Westside Elementary	School District	Hood River	15.9 ac.						X	Soccer fields (2), baseball fields (2), covered play area, play structures, gym (indoors)
Wy'east Middle School	School District	Odell	20 ac.						X	Football field, track, covered stadium, 2 soccer fields, gym (2 indoors), theater (indoors)
Indian Creek Trail System	Trail	Third-Hazel St. to HRVHS, HR	3.3	X						3.3 miles soft-surface trail
USFS Trail System	Trail	Wilderness Areas	526.9 mi.					X		Campsites, access to Mt. Hood Timberline Trail, NFS cabins, Elliot Glacier, views
Historic Hwy	Trail	Between Mosier and Bonneville	8.5 mi.					X		Various sections are accessed along Columbia River

(cont.) Table 3-2. Parks and Trails in the Hood River Valley										
Facility	Type	Location	Acres/ Miles	Ownership						Amenities
				District	City	County	Port	State/Fed	Other	
County Trail System	Trail	Southwest of Hood River	60.6 mi.			X				Trails located between Kingsley Reservoir and Wygant State Natural Area
2 nd St. Steps Right-of-way	Trail	Corner of 2 nd St and State HR	0.16 mi.		X					Overlook, natural area

3.3 Summary: Hood River Valley Parks

The Park District and their partners have over 123,000 acres of parkland (Table 3-3). The majority of this property is categorized as Regional Parks (99%), which includes federal, state, and county forestland as well as campgrounds. Of the remaining one percent of parkland, the Park District owns 4%, the City of Hood River owns 4%, the Port owns 6%, the County owns 62%, state owns 11%, the school district owns 9%, and “other parkland” makes up 2%.

Table 3-3. PARKLAND BY PARK TYPE			
Park Classification	Acres within City of Hood River	Acres outside City of Hood River	Total Acres
Neighborhood Parks	14.9	3.3	18.2
Community Parks	84.3	0	84.3
Regional Parks (includes federal, state and county forest land)	6.4	123,352	123,358.4
Special Use Parks	9.3	3.5	12.8
Open Space and Waterfront	41.3	0	41.3
Undeveloped Parkland	135.1	6.8	141.9
School District Parks	58.9	35.3	94.2
TOTAL	350.2	123,401	123,751

TRAILS

Trails within the Park District are provided by the Park District, City of Hood River, the Port of Hood River, Hood River County, Oregon State, and the United States Forest Service. There are over 600 miles of trails that provide a variety of opportunities for recreation, including hiking, biking, horseback riding, and ATV use. Map 5 in Appendix A shows existing and proposed trails within and around the City of Hood River. Map 6 in Appendix A shows trails throughout the Park District.

PARKS AND RECREATION NEEDS ANALYSIS

The parks and recreation needs analysis summarizes the key findings from the community profile and public outreach efforts. These key findings guide the overall Plan goals and objectives that will be presented in Chapter 5.

4.1 Key Findings - Public Involvement Activities

Five common themes emerged through the synthesis of public involvement activities. A description of the public involvement process can be found in Appendix D.

HIGH USER SATISFACTION

The public outreach activities indicated a high level of satisfaction with the current park system quality and maintenance and the array of recreation opportunities that serves a diverse group of users.

DESIRE FOR PARK IMPROVEMENTS

The public outreach efforts indicated demand for the following improvements:

- More sport fields, especially for soccer/lacrosse and baseball/softball
- Additional and/or improved sport courts, especially tennis and basketball
- More picnic areas, including picnic shelters, tables and grills
- Indoor spaces for sports and recreation programs

PRIORITIZATION OF MAINTENANCE

Maintenance of existing facilities emerged as the highest priority item for park expenditures, with an expressed preference for maintenance of existing facilities over addition of new facilities and an acknowledgement of the need for additional funding for operation and maintenance costs.

IMPROVE CONNECTIVITY

Trail development is a priority to residents, particularly with regard to connectivity between existing trails, schools, parks and to the waterfront.

IMPROVE COMMUNITY RELATIONS

The public outreach efforts indicated that many people were unable to define the role of the Park District in the community, which appears to be attributable to the varied and overlapping roles of multiple agencies that provide parks and recreation services. Improved understanding of the role of the Park District in the region was identified as a means of improving community support.

4.2 Research from SCORP

(Statewide Comprehensive Outdoor Recreation Plan)

The public outreach activities and demographics analysis identified several user groups that are in need of special considerations for parks planning in the Hood River Valley; these include seniors, teenage youth, the Latino population, and seasonal recreational users. By identifying user needs and preferences for these groups, the Park District can assure they are represented within their goals and objectives.

The Oregon Parks and Recreation Department's Statewide Comprehensive Outdoor Recreation Plan (SCORP, 2008-2011) includes research focused on serving aging populations, youth, and diverse populations. The plan provides recommendations for how to serve these populations based on comprehensive trend analysis. The following sections include information from SCORP that provide recommendations for serving these user groups. These findings are intended to supplement the above Park District public outreach findings to best meet these user group needs.

BABY BOOMERS

SCORP indicates that the most intensively participated in activity for boomer and pre-boomer populations in (2008) included walking, bird watching, jogging, sightseeing, and bicycling.⁹ Walking was a popular outdoor recreation activity for all age groups and was chosen as the top activity for both boomers and pre-boomer populations.

SCORP makes several recommendations for serving the baby boomer population that are relevant to the Hood River Valley:

- Develop accessible trails in remote settings in close proximity to urban areas of the state

⁹ Statewide Comprehensive Outdoor Recreation Plan (SCORP), January 2008, Department of Parks and Recreation http://egov.oregon.gov/OPRD/PLANS/scrop08_12.shtml.

- Encourage trail use by making sure trails are safe and accessible. Information about trail systems should be made easily available to these users
- Facilitate the development of local senior walking clubs
- Develop volunteer opportunities for the boomer population

TEENAGERS

SCORP also addresses concerns for decreasing trends in outdoor recreation participation among youth.¹⁰ The Oregon Parks and Recreation Department’s (OPRD) research indicates that the number of 11th graders that are overweight increased by 63% between 2001 and 2007.¹¹

SCORP makes several recommendations for serving youth, which includes teenage users. Components from these recommendations that are relevant to the Hood River Valley include:

- Develop strategies for securing funding for youth/teenage recreation programming
- Develop “Lets go Camping” marketing campaign for teenage users and families (camping in tents was a preferred activity for youth and teenage populations)
- Consider “innovative park designs” that connect youth/teens with nature

LATINO POPULATIONS

The demographics section notes the need to consider the needs of an expanding Latino population. In addition, SCORP listed the City of Hood River as “high priority” for its increase in Hispanic ethnicity diversity. The following recommendations were made by OPRD in SCORP to address this need:

- Encourage organizational culture change within public recreation agencies/organizations to effectively address the diversity issue
- Create a pilot project to identify how to increase under-represented population access to outdoor sports fields
- Develop recommendations for addressing language barriers to encourage under-represented population use of outdoor recreation facilities and programs

¹⁰ SCORP (2008)

¹¹ As cited in SCORP (2008): Oregon Overweight, Obesity, Physical Activity, and Nutrition Facts. January 2007. Oregon Department of Human Services, Physical Activity and Nutrition Program.

- Create a customer service training module related to serving the outdoor recreation needs of an increasingly diverse population
- Develop and implement a regional youth framework to encourage under-represented youth participation in outdoor recreation activities through partnerships and investments in school-based recreation clubs

A Health Needs Assessment for the Hood River Latino Community was conducted in 2008.¹² The Health Assessment found that the main health concerns among Latinos were diabetes, pollution, and obesity. Two recommendations from this plan that address the health needs of the Latino community and are relevant to parks and recreation include: (1) provide more opportunities for recreation and physical activity at no or low cost, and (2) consider methods for making parks and recreation programming information available and/or accessible to the Latino population.

¹² Health Needs Assessment for the Latino Community, 2008, Nuestra Comunidad Sana, The Next Door Inc.

PARK DISTRICT MISSION AND GOALS

The Park District’s 10-year vision for parks and recreation within the planning area is guided by the Park District’s Mission, and will be achieved through guiding principles, goals, and objectives that were created through the parks planning process. The mission, guiding principles, and goals are provided below.

5.1 Park District Mission

“The Mission of the Hood River Valley Parks and Recreation District is to provide recreational opportunities to the citizens of the Park District, with focus on the youth of our community. Facilities and programs will be developed and maintained to provide safe and economical recreational environments for all users.”

5.2 Guiding Principles

The guiding principles for the 2012 Master Plan, with which all goals and objectives must be consistent, are as follows:

- The Park District’s main ongoing priority is the operation and maintenance (O&M) of the Aquatic Center, and this prioritization will be reflected in annual operating budget allocations.
- The Park District will maintain its inventory of other existing facilities, including the skate park, the trail system, and community and neighborhood parks, and O&M budget allocations for these facilities will not be superseded by budget needs for new projects.
- The Park District will develop new parks and recreation facilities to serve a diverse range of residents within the Park District, and will implement such projects in a fiscally responsible manner.
- The Park District will capitalize on new opportunities as they arise even if not specifically identified in the Master Plan.
- The Park District will foster and maintain good relationships with partner agencies to coordinate planning, development, and O&M efforts and to maximize local recreation resources.

5.3 Goals & Objectives

The Park District's goals for new or enhanced parks and recreation facilities within the 10-year time frame of the 2012 Master Plan and the associated objectives to achieve these goals are:

GOAL: AQUATIC CENTER

Evaluate options for improvement to the Aquatic Center to maintain its status of a state-of-the-art aquatic facility.

OBJECTIVES:

- In addition to maintaining the aquatic facility, improvements in energy efficiency, safety, employee training, customer satisfaction, etc will be prioritized.
- Options for end-of-life structure upgrades/replacement, and pool sanitizer upgrade will be studied.

GOAL: SPORTS FACILITIES

Utilize partnerships to develop and improve sports fields and courts to meet the evolving demand of the community.

OBJECTIVES:

Lead efforts to:

- Develop new sports fields for soccer and lacrosse
- Implement long term community goal of a baseball/softball complex
- Ensure needed public sport-courts are available
- Study the feasibility of an indoor soccer/sport facility

GOAL: TRAILS

Continue to develop multi-use trails that provide users safe opportunities to recreate and to connect to major destinations throughout the greater Hood River Valley.

OBJECTIVES:

- Improve trail connectivity with the completion of missing links in the existing trail networks, including:
 - Rotary Skate Park to Waterfront Trail (in conjunction with partners)
 - Segment two of Indian Creek Trail

- The Westside Community Trail connection from the Skate Park to Westside School
 - The Indian Creek Trail extension from the High School through the Barrett Park property
 - Hood River/Powerdale dam trail with connection to east end of Indian Creek Trail (in conjunction with partners)
- Partner with the School District, the City, and the County to create safe routes to school for children
 - Include signage and, where appropriate, parking and restrooms at trailhead facilities
 - Work with partners to improve trail connectivity between public facilities, parks, and open space
 - Partner with Hood River City and County to implement existing transportation plans

GOAL: PARKLAND DEVELOPMENT

Develop and maintain quality parks distributed throughout the Hood River Valley that provide for a diverse range of recreational opportunities.

OBJECTIVES:

- Provide or improve picnic shelters, picnic tables, bathroom facilities, signage and parking at existing parks
- Complete Barrett Community Park
- Work with partners to provide more public access to the Columbia and Hood Rivers; including, but not limited to, the Punchbowl and Powerdale properties
- Include designated dog park areas in existing or new parkland

5.5 Implementation

The Park District Board of Directors will prioritize these goals and objectives on an annual basis. Prioritization will be based on the values reflected in the Park District’s mission and guiding principles listed at the beginning of this Chapter. Many of these objectives cannot be implemented without closely working with partners, such as the City, County, Port, School District and other community groups. Several community needs in particular have been identified by the Park District and their partners as requiring interagency collaboration.

APPENDICES

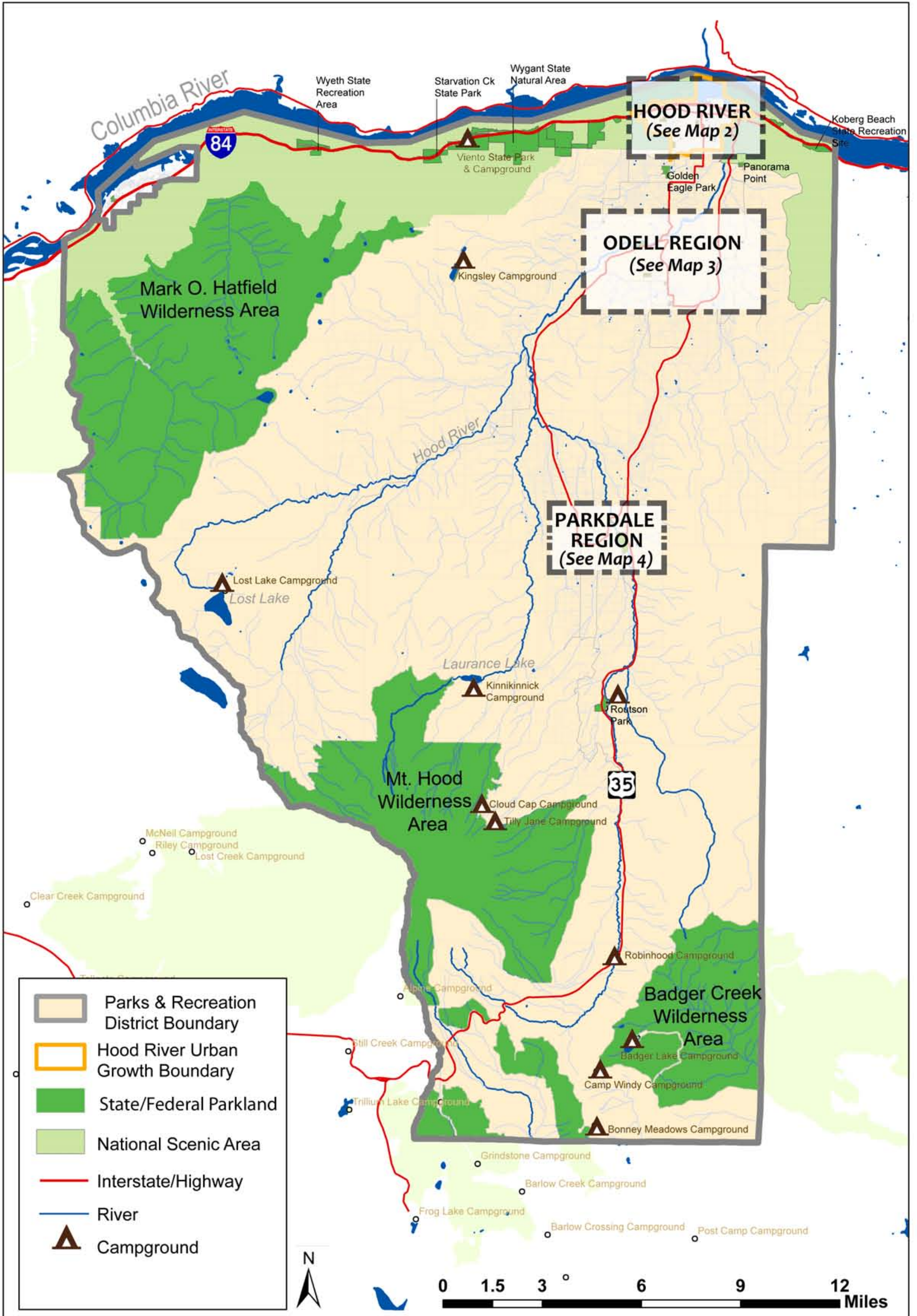
[Appendix A: Maps](#)

[Appendix B: Park Classifications](#)

[Appendix C: Operations and Maintenance Budget
and Funding Strategies](#)

[Appendix D: Public Participation Process](#)

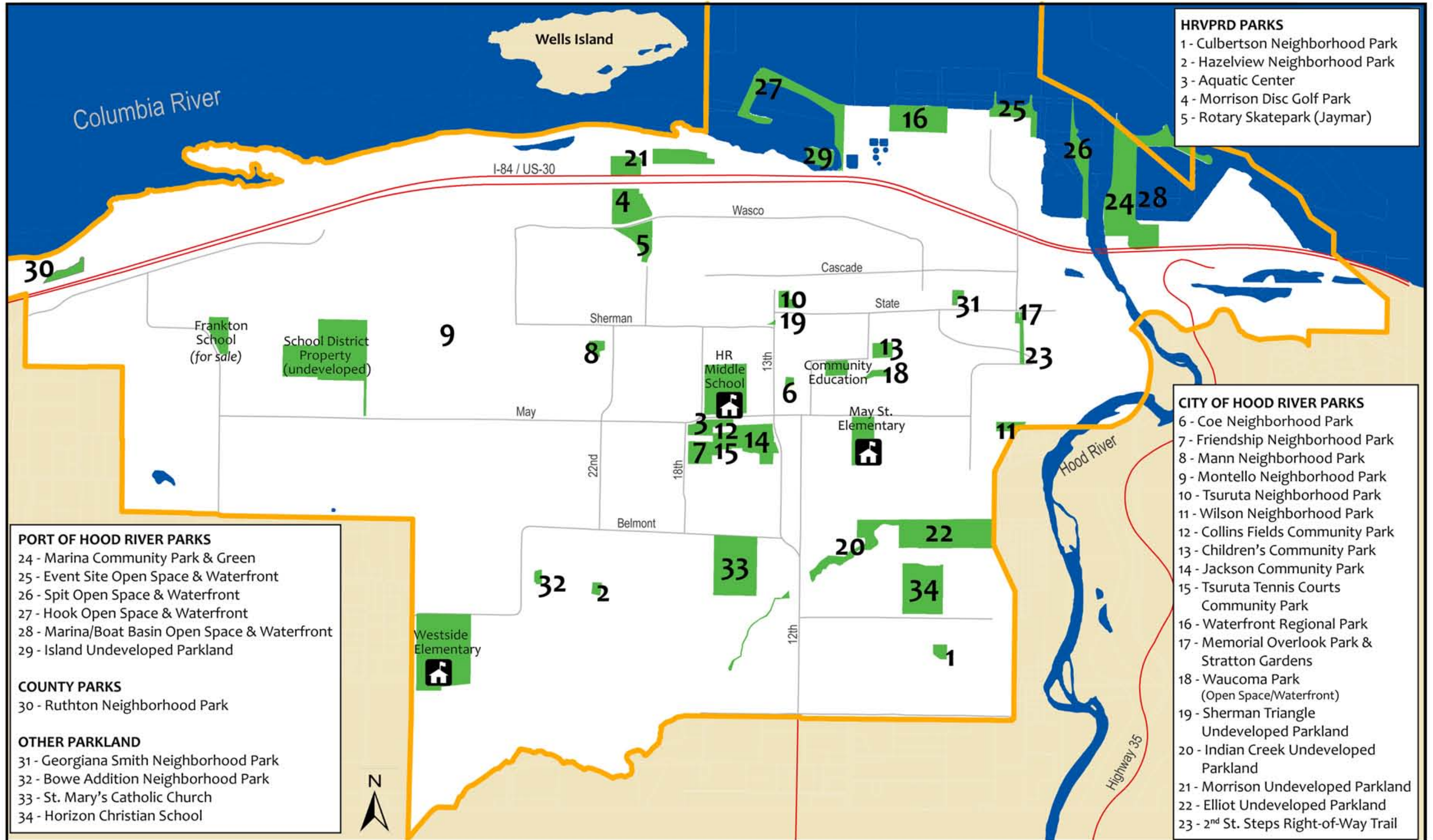
MAP 1: HOOD RIVER VALLEY PARKS & RECREATION DISTRICT MAP



1:175,000

HOOD RIVER VALLEY PARKS AND RECREATION DISTRICT

MAP 2: PARKS IN HOOD RIVER CITY



- HRVPRD PARKS**
- 1 - Culbertson Neighborhood Park
 - 2 - Hazelview Neighborhood Park
 - 3 - Aquatic Center
 - 4 - Morrison Disc Golf Park
 - 5 - Rotary Skatepark (Jaymar)

- CITY OF HOOD RIVER PARKS**
- 6 - Coe Neighborhood Park
 - 7 - Friendship Neighborhood Park
 - 8 - Mann Neighborhood Park
 - 9 - Montello Neighborhood Park
 - 10 - Tsuruta Neighborhood Park
 - 11 - Wilson Neighborhood Park
 - 12 - Collins Fields Community Park
 - 13 - Children's Community Park
 - 14 - Jackson Community Park
 - 15 - Tsuruta Tennis Courts Community Park
 - 16 - Waterfront Regional Park
 - 17 - Memorial Overlook Park & Stratton Gardens
 - 18 - Waucoma Park (Open Space/Waterfront)
 - 19 - Sherman Triangle Undeveloped Parkland
 - 20 - Indian Creek Undeveloped Parkland
 - 21 - Morrison Undeveloped Parkland
 - 22 - Elliot Undeveloped Parkland
 - 23 - 2nd St. Steps Right-of-Way Trail

- PORT OF HOOD RIVER PARKS**
- 24 - Marina Community Park & Green
 - 25 - Event Site Open Space & Waterfront
 - 26 - Spit Open Space & Waterfront
 - 27 - Hook Open Space & Waterfront
 - 28 - Marina/Boat Basin Open Space & Waterfront
 - 29 - Island Undeveloped Parkland

- COUNTY PARKS**
- 30 - Ruthton Neighborhood Park

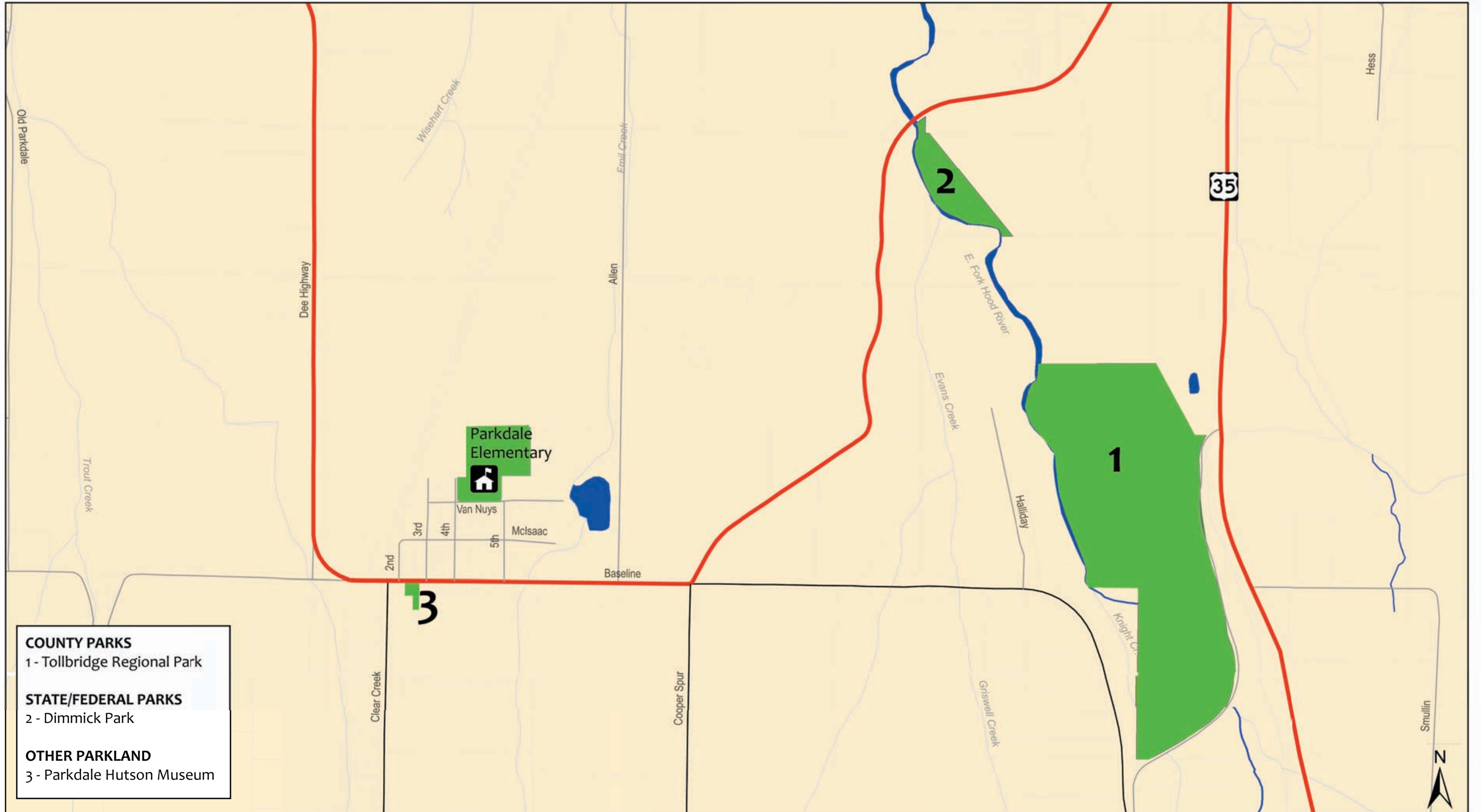
- OTHER PARKLAND**
- 31 - Georgiana Smith Neighborhood Park
 - 32 - Bove Addition Neighborhood Park
 - 33 - St. Mary's Catholic Church
 - 34 - Horizon Christian School

0 0.125 0.25 0.5 0.75 Miles

1:15,000

HOOD RIVER VALLEY PARKS AND RECREATION DISTRICT

MAP 3: PARKDALE REGION



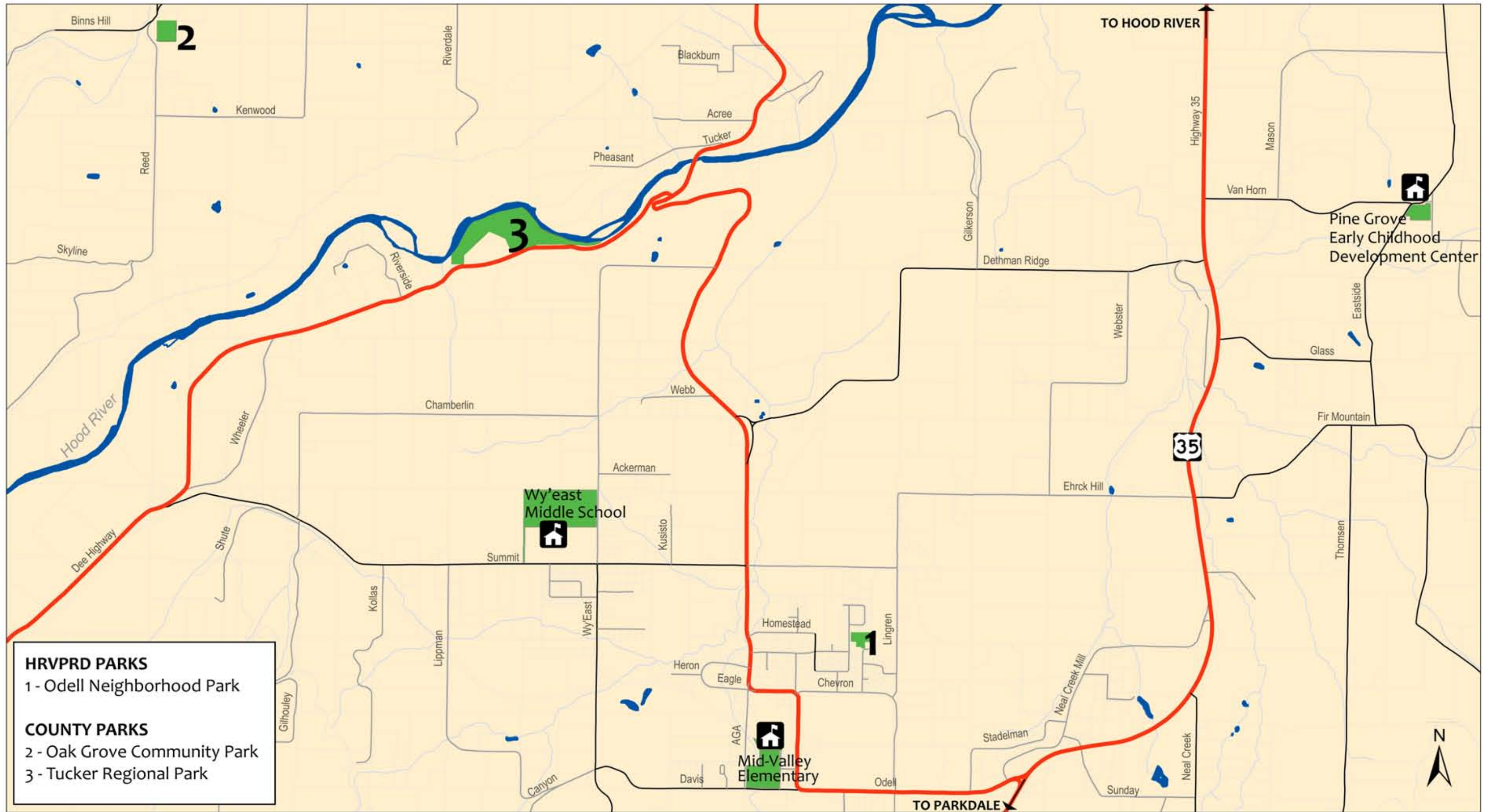
- COUNTY PARKS**
1 - Tollbridge Regional Park
- STATE/FEDERAL PARKS**
2 - Dimmick Park
- OTHER PARKLAND**
3 - Parkdale Hutson Museum

0 0.25 0.5 0.75 1 Miles

1:10,000

HOOD RIVER VALLEY PARKS AND RECREATION DISTRICT

MAP 4: ODELL REGION



HRVPRD PARKS
1 - Odell Neighborhood Park

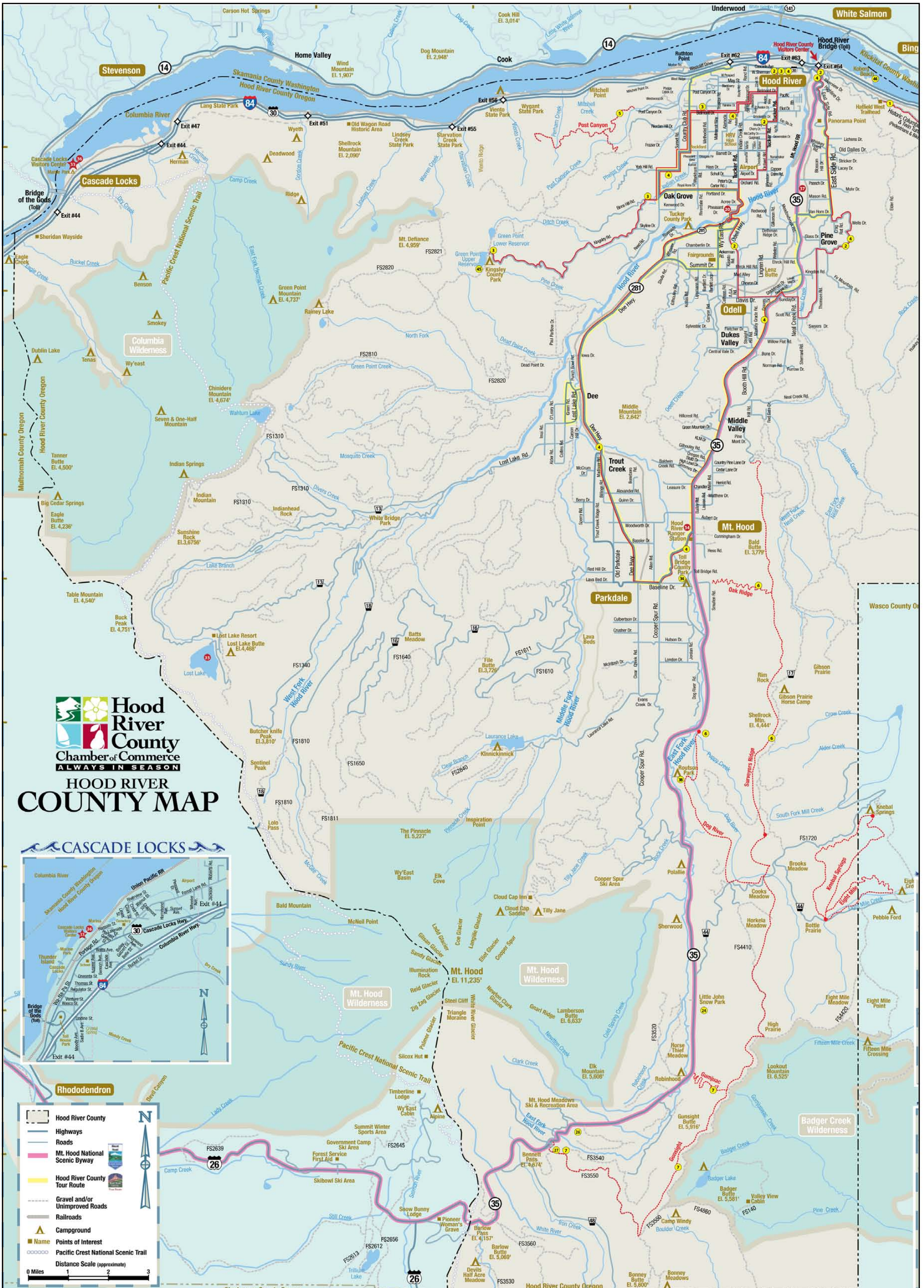
COUNTY PARKS
2 - Oak Grove Community Park
3 - Tucker Regional Park

0 0.25 0.5 0.75 1 Miles

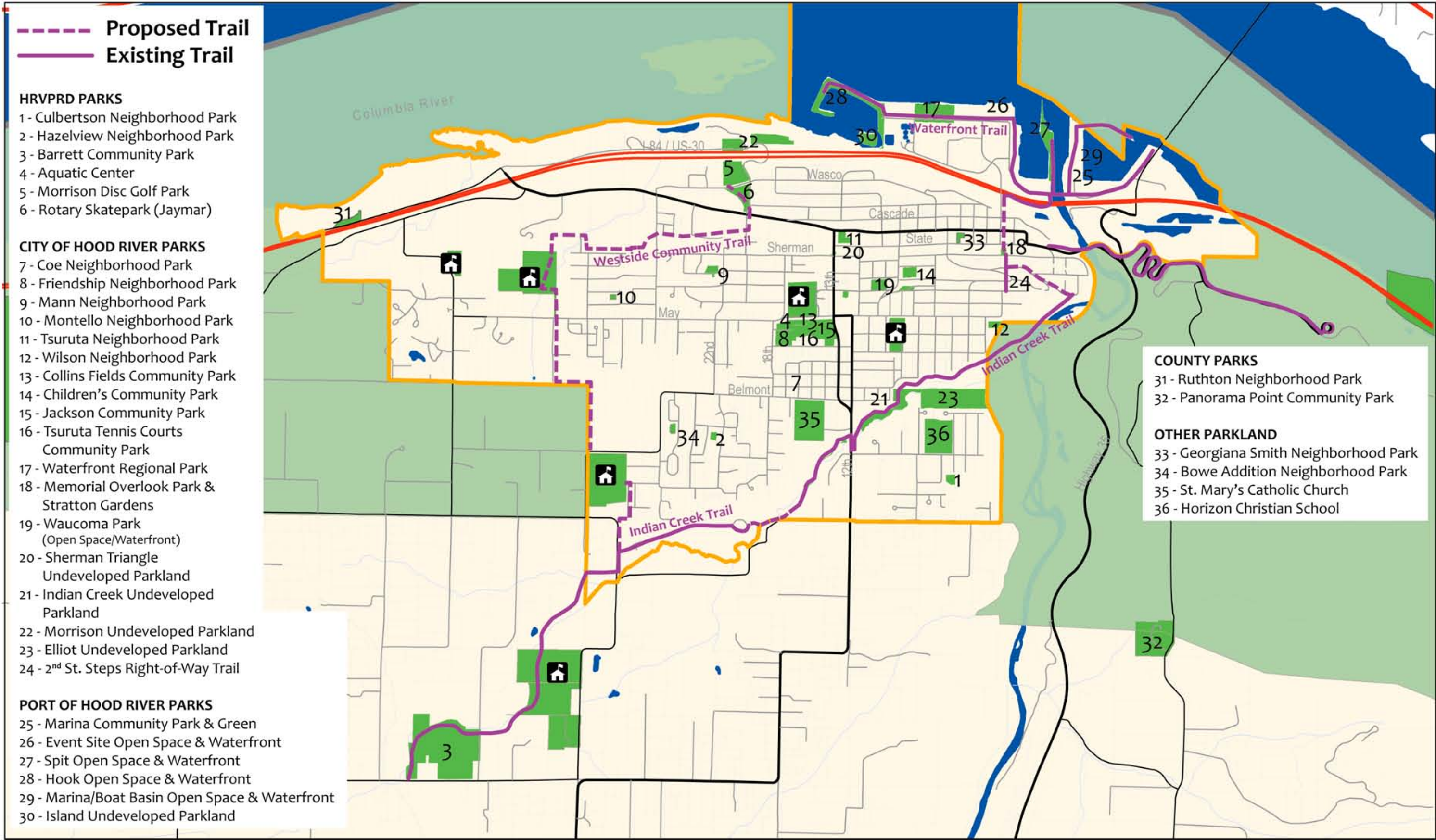
1:20,000

HOOD RIVER VALLEY PARKS AND RECREATION DISTRICT

MAP 5: HOOD RIVER COUNTY TRAILS



MAP 6: TRAILS IN CITY OF HOOD RIVER



0 0.25 0.5 0.75 1 Miles 1:22,000

HOOD RIVER VALLEY PARKS AND RECREATION DISTRICT

Appendix B: Park Classification Table

Table B-1: Classification System

TYPE OF FACILITY	DESCRIPTION	SIZE CRITERIA
Neighborhood Parks	Neighborhood parks offer accessible recreation and social opportunities to nearby residents. These should accommodate the needs of a wide variety of age and user groups. Neighborhood parks should include both passive and active recreation opportunities such as children's play areas, sports courts and fields, picnic facilities, public art, open lawn areas, sitting areas, landscaping, community gardens, restrooms, and pathways. These should be accessible by sidewalks, trails, and/or low-traffic residential streets.	0.25 - 10 acres
Community Parks	Community parks are larger in size and serve a wider base of residents than neighborhood parks. Community parks often include facilities for organized group, individual, and family activities. They provide educational opportunities, serve recreational needs of families, and preserve open spaces and unique landscapes. Community parks may offer sports facilities for large groups, group picnic areas, gardens, amphitheaters, event space, interpretive facilities, and community centers. Quality play areas may be provided to create a family play destination. These parks serve as a focal point for the community.	10 - 50 acres
Regional Parks	Regional parks provide a variety of active and passive recreation opportunities for all ages and serve to preserve open spaces and landscapes. These parks are larger than community parks and attract people from outside the community by offering recreational opportunities that benefit residents and attract visitors. Regional parks may offer benches, picnic tables, multi-purpose trails, landscaping, camping amenities, and natural areas. These parks may also include sports and community facilities similar to a community park.	50+ acres
Special Use Parks	Special use parks are facilities that provide a civic function or cultural and historical significance. They can be used for a variety of civic functions and community gatherings.	none

TYPE OF FACILITY	DESCRIPTION	SIZE CRITERIA
Open Space and Waterfront	Open space areas are often located in environmentally sensitive areas including: wetlands, waterfronts, steep hillsides, riparian areas and endangered plant/animal habitats. They should be managed primarily for ecological values and secondarily for recreation. They provide opportunities for habitat conservation and restoration as well as nature-based recreation. Open space protects natural resources and wildlife and allow residents to experience the natural environment close to home.	none
Undeveloped Parkland	This is land that has not been designated for a specific park use at this time. It does not have any permanent facilities.	none
School District Property	School playgrounds and recreational facilities provide a variety of active and passive recreation opportunities designed to service a certain age group within the community. Residents in the community have the potential to utilize school district facilities for active and passive uses during non-school hours. Elementary and middle or junior high schools may offer playgrounds and sports facilities. High schools tend to offer solely sport facilities.	Vary in size depending on the population
Trails and Linear Parks	Trails and linear parks are usually developed around a natural resource such as a creek, river or lakeshore. Linear parks can provide a natural environment for walking, jogging, and bicycling. They provide a transit corridor linking neighborhoods to parks, schools and shopping areas.	none

Appendix C: Operations and Maintenance (O&M) Budget and Funding Strategy Descriptions

This appendix analyzes the portion of the 2010-2011 HRVPRD budget that is spent on maintenance and operations and on Full Time Employment (FTE). It compares these expenses with those of other Parks and Recreation departments and districts. It also provides an assessment of the percentage of resources dedicated to acquisition and development.¹

Operation and maintenance costs of current parks and facilities accounted for approximately 40% of the FY 2010/11 budget, the last year for which data is available.

The same year, the HRVPRD dedicated 1.08 FTE and \$40,146 toward the maintenance and operation of developed parkland. This sum includes expenditures on both labor and materials.

DEVELOPED LAND

The average FTE per acre of developed parkland is 0.10 FTE. This number is comparable to the parks departments of Sisters (.12) but is larger than the averages for Monmouth (.03) and Warrenton (.02). The average HRVPRD cost of maintenance per acre is \$3,860. This average falls between that of Talent (\$5,898 per acre) and Troutdale (\$2,444 per acre).²

Table C-1: Developed Park Land Maintenance and Operations Costs

District Maintenance and Operations Expenses: Developed Park Land						
Facility	Acres	Labor Hours	Labor Costs	Materials	TOTAL	FTE TOTAL
Neighborhood Parks						
Culbertson	0.6	104	\$1,248	\$2,500	\$3,748	FTE = .35
Hazelview	0.35	104	\$1,248	\$2,500	\$3,748	
Odell	1.8	520	\$6,240	\$1,000	\$7,240	
Specialty Parks						
Rotary Skatepark	2.65	1300	\$14,300	\$5,800	\$20,100	FTE = .73
Morrison Disc Golf	5	210	\$2,310	\$3,000	\$5,310	
TOTAL	10.4	2238	\$25,346	\$14,800	\$40,146	FTE = 1.08

Source: HRVPRD Budget

¹ District Maintenance and Operations expenses were provided by the District and were not taken from the end-of-year profit and loss statement.

² Average FTE per acre and cost per acre calculations for comparable communities have been taken from the CPW's previous parks plans.

Appendix C

Table C- 2: District Maintenance Cost by Park Type

District Maintenance by Park Type		
	% of FTE	% of Total O&M Spending
Neighborhood Parks	4.7%	1.3%
Specialty Parks	8%	4.5%
Trails	0.05%	0.66%
Aquatic Center	86%	90%
Sand Volleyball	0%	1.1%
Barrett Park	0.05%	1.6%

Source: HRVPRD Budget

AQUATIC CENTER

The Aquatic Center accounts for 86% of total FTE dedicated toward maintenance and operations and 90% of spending. Because of this, the Aquatic Center facility and its exterior have been considered separately from developed parkland. The overall cost of maintaining and operating the Aquatic Center is less than the amount spent by other Parks Districts such as Bend and Tualatin³ to maintain aquatic facilities.

Table C-3: Aquatic Center Maintenance and Operations Costs

District Maintenance and Operations Expenses: Aquatic Center					
Facility	Labor Hours	Labor Costs	Materials	TOTAL	FTE TOTAL
Aquatic Center					
Managers, SC	5000	\$105,000			
Guards/front desk	9000	\$90,000			FTE = 7.7
Instructors	780	\$8,500			
Maintenance	1300	\$15,500			
Misc. payroll		\$80,000		\$299,000	
AC repair/maint.			\$42,000		
Chemicals			\$37,500		
Utilities			\$126,760		
				\$206,260	

Source: HRVPRD

³ Spending on aquatic facilities by the Bend and Tualatin Park Districts is based on FY 2010/11 budgets available online.

Appendix C

FUNDING STRATEGY DESCRIPTIONS

Chapter 5 of the Plan lists potential funding strategies for the Parks District. Here are more detailed descriptions of these strategies:

Funding Strategy	Description
Private and Public Partnerships	Partnerships are joint development funding sources or operational funding sources between two separate agencies, such as two government entities, a non-profit and a City department, or a private business and a City agency. Two partners jointly develop revenue producing park and recreation facilities and share risk, operational costs, responsibilities, and asset management based on the strengths and weaknesses of each partner.
Donations	These dollars are raised from tax-exempt, non-profit organizations established with private donations in promotion of specific causes, activities, or issues. They offer a variety of means to fund capital projects, including capital campaigns, gifts catalogs, fundraisers, endowments, sales of items, etc.
Grants	A variety of special grants either currently exist through the Federal and State governmental systems or will be established through the life of current and proposed facilities.
General Obligation (G.O.) Bonds	Bonds that raise money for capital improvements and general public improvements. These bonds must be approved by voters.
Revenue Bonds	Bonds used for capital projects that will generate revenue for debt service where fees can be set aside to support repayment of the bond.
Local Option Levies	A local option levy for capital improvements provides for a separate property tax levy outside the permanent rate limit, subject to the

Appendix C

\$10 combined rate limit imposed under Measure #5. This levy may be used to fund a capital project or group of projects over a specified period of time, up to 5 years. Revenues from these levies may be used to secure bonds for projects, or to complete one or more projects on a “pay as you go” basis. Local option levies require voter approval and are subject to the double majority requirement of Measure # 50 (>50% of registered voters must participate and >50% of voters must approve for local option levies to pass).

A local option levy for operations provides for a separate property tax levy outside the Parks District’s permanent rate limit, subject to the \$10 combined rate limit imposed under Measure #5. This levy may be used to fund operations and maintenance activities over a specified period of time, up to 5 years. These local option levies require voter approval and are subject to the double majority requirement of Measure # 50 (>50% of registered voters must participate and >50% of voters must approve for local option levies to pass).

System Development Charges

These fees are assessed for the development of residential and/or commercial properties with the proceeds to be used for parks and recreation purposes, such as open space acquisition, community park site development, neighborhood parks development, regional parks development, etc. The Parks District will update collection rates on a periodic basis in order to keep rates up-to-date with development costs. Updates must be done in a manner meeting all state and local ordinances and coordinated with the collection activities performed by the City and County.

Appendix C

Utility Fee

These fees are charged to residents on a recurring basis via utility billing. The fee may take the form of a small lump sum added to a utility bill and is one method of generating funds for long term maintenance and upkeep of facilities.

Park User Fees or Dedicated Parking Fees

This fee applies to parking at selected destination facilities such as beach parking areas, major stadiums and other attractions to help offset capital and operational cost or to use of selected facilities. The potential outcome of revenue generation is consistent with national trends relating to public park and recreation agencies, which generate an average 35% to 50% of operating expenditures.

Transient Use Tax

Tax based on gross receipts from charges and meals services at hotels, motels or restaurants, which may be used to build and operate sports fields, regional parks, golf courses, tennis courts, and other special park and recreation facilities.

Appendix D: Public Participation

METHODOLOGY

COMMUNITY HOUSEHOLD SURVEY

The household survey provides a broad assessment of community attitudes toward parks and open spaces. As part of the planning process the Community Planning Workshop (CPW) created an eight-page survey comprised of 23 questions regarding potential park system improvements, opinions on maintenance and acquisitions, important features of parks, and willingness to fund parks and activities. The survey was distributed by mail in June 2011 to 1,360 randomly selected registered voters within the Parks District planning area. Prior to distribution of the survey, selected households were sent a postcard notifying them of their selection to participate. The mailing contained the survey instrument, a cover letter from the Parks District, and a free pool pass to the Parks District Aquatic Center. Respondents were given a two-week deadline to complete the survey, which was later extended by one week. The completed surveys were returned to CPW via a prepaid postage.

A Spanish version of the survey was also created and distributed with the assistance of Community Health Workers from Nuestra Comunidad Sana of The Next Door, Inc. The surveys were completed through interviews with farmworkers, business owners, church members, social service agency workers, child care providers, taxi drivers, housewives, retail workers and other Spanish speaking residents. Fifty surveys were completed through this process.

A total of 322 residents completed and returned the mailed out surveys, and 50 of the Spanish surveys were completed, resulting in an overall response rate of 27%. CPW has conducted surveys in communities across Oregon and considers this level of response to be on par or above levels in other similar communities. We feel that it accurately supports the needs analysis of this plan.

STAKEHOLDER INTERVIEWS

The intent of the stakeholder interviews was to get specific feedback about strengths and weaknesses of the regional park system from partnering agencies and leaders providing parks and recreation services in the community. The Parks District Board of Directors identified eleven stakeholders in the community to participate in these one-on-one interviews with CPW staff.

Interviews were conducted by telephone over a three week period in September 2011. Nine out of the eleven identified stakeholders took part in the interview process.

Participants represented the following groups and agencies:

- The City of Hood River
- Hood River County (2)
- The Port of Hood River
- The Hood River Valley Residents Committee
- Hood River Business Owners
- Hood River Community Education
- George Grown Food Network
- The Next Door, Inc.

LATINO FOCUS GROUP

The Latino Focus Group was held at the Hood River Inn on September 26, 2011. A total of six participants from the Latino community attended the meeting; two men and four women. Lorena Sprager and Joel Pelayo from Nuestra Comunidad Sana of The Next Door organization recruited the participants and facilitated the focus group. The Next Door is a non-profit, Hood River-based organization that provides support for community oriented projects.

The meeting lasted one hour and was conducted entirely in Spanish. The main objectives of the meeting were to review results from the Spanish survey, identify strengths and weaknesses of or barriers that limit involvement in parks and recreation services in the region.

COMMUNITY WORKSHOP

The purpose of the community workshop was to determine community opinions about the strengths and weaknesses of the current parks system and to provide information about the Parks and Recreation Master planning process. Over 25 community members attended the September 26, 2011 community workshop at the Hood River Inn, facilitated by CPW, board members and Parks District staff. While the event was advertised as bilingual, no Spanish speakers attended; therefore, the workshop was conducted entirely in English.

The meeting consisted of both a presentation by the Community Planning Workshop (CPW) and opportunities for participants to engage in conversations and provide feedback. Comments made in the meeting from were written up and consolidated in to key findings.

COMMUNITY HOUSEHOLD SURVEY RESULTS

KEY FINDINGS

- Residents feel strongly that parks are an important part of maintaining the community's quality of life.
- Residents are generally satisfied with the quality & maintenance of the parks system.
- Familiarity with and use of specific parks varies widely.
- Walking, hiking and bicycling for pleasure are the activities participated in most frequently. Disc golf and volleyball are the least frequently participated in activities.
- More people felt unpaved trails were important of the types of trails provided in the survey; and that soccer/lacrosse, baseball/softball, basketball and tennis were the most important of the sports listed in the survey.
- Respondents feel that it is important to provide safe, well-maintained parks that accommodate young children and families.
 - The data for whether the Valley needs more parks was inconclusive with 49% saying yes, 32% saying no, and 19% being unsure. If additional parks were to

be added, the Westside of Hood River and Odell were identified as areas most in need of more parks.

- Respondents prioritized funding towards maintenance & improvements and the additional trails. Overall, the least funding was dedicated to additional parks.

DEMOGRAPHICS

Survey respondent demographics are shown in the section below. Demographic variations between survey respondents and 2010 U.S. Census data for Hood River County are also noted. Upon completion of this report the 2010 Census data for income and poverty levels was still unavailable and is therefore not compared for analysis.

LENGTH OF RESIDENCE

Half of the respondents have lived in the area for 20 or fewer years, while the other half have lived in the area for 20 or more years. The largest category of respondents was those who have lived in the area for 11-20 years.

How long have you lived in the area?	
1-10 years	24%
11-20 years	26%
21-30 years	18%
31-40 years	15%
41-50 years	5%
51-60 years	6%
61-99 years	5%

HOME OWNERSHIP

The large majority of respondents are homeowners. While 87% of survey residents stated that they own their homes, the U.S. Census indicates that a smaller number of the overall county population (62.9%) are living in homes they own.

Do you own or rent your home?	
Own	87%
Rent	10%
Other	3%

HOUSEHOLD INCOME

Over half (65%) of respondents identified their household income to be \$50,000 or over.

Please estimate your total household income, before taxes, in 2010.	
< \$10,000	2%
\$10,000 - \$19,999	6%
\$20,000 - \$29,000	8%
\$30,000 - \$39,000	9%
\$40,000 - \$49,000	9%
\$50,000 - \$59,000	11%
\$60,000 - \$74,999	16%
\$75,000 - \$99,999	16%
\$100,000 - \$149,999	15%
\$150,000>	7%

AGE AND GENDER

Most survey respondents were age 40 or older (75%), which is older than the median age of Hood River County residents (38.5 years old) according to the 2010 Census. There was a higher response from females in the survey (61%) than males, while the county's male/female population is split evenly according to 2010 US Census data.

What is your age?	
0-9 years	0%
10-19 years	2%
20-29 years	7%
30-39 years	16%
40-49 years	19%
50-59 years	28%
60-69 years	16%
70-79 years	9%
80-89 years	3%
90-99 years	0%
What is your gender?	
Male	39%
Female	61%

SURVEY RESULTS

Quality of Life

Most (94%) respondents felt that parks are either “very important” or “important” to the quality of life in the Hood River Valley.

Question 1: In your opinion, how important or unimportant are parks to the Hood River Valley's quality of life?	
Very Important	74%
Somewhat Important	20%
Neither	2%
Somewhat Unimportant	2%
Very Unimportant	2%
No Opinion	0%

Satisfaction

Most (72%) respondents were either “satisfied” or “very satisfied” with the overall quality of the parks system, while 9% were either “dissatisfied” or “very dissatisfied.”

Question 2: How satisfied or dissatisfied are you with the overall quality of the parks system in the Hood River Valley?	
Very Satisfied	18%
Satisfied	54%
Neither	17%
Dissatisfied	8%
Very Dissatisfied	2%
No Opinion	1%

Familiarity and Use

Most (89%) respondents visited a park in the Hood River Valley within the last 12 months.

Question 3: Have you visited a park in the Hood River Valley in the last 12 months?	
Yes	89%
No	11%

When respondents who did not visit a park were asked for reasons why they had not, the most popular answer was that they “would rather do something else” (39%) or that they did not have time (32%).

Question 3a: If not, why not?	
Other	45%
Would rather do something else	39%
Don't have time	32%
Too Crowded	13%
Limited parking	13%
Inadequate facilities	11%
Too far away	8%
Conditions of facilities	8%
Don't know where parks are	5%
Feel unsafe	3%
Not handicap accessible	3%

Responses for “Other” (45%) included the following relevant comments:

Inadequate facilities (2): *No sports activities except skateboarding, No good Dog parks*

Conditions of facilities (4): *Too old (2), poor restroom facilities, accessibility issues*

No Reason or Need to Visit Them (6): *Don't have kids (3), No need (2), Have lots of land*

Other Reasons (4): *Too many tourists, no transportation, cost, go elsewhere*

Respondents were asked about their familiarity and use of specific parks in the Hood River Valley. Of all of the parks, respondents were by far least familiar with Dimmick Park (57% were unfamiliar) and Mann Park (50% unfamiliar). They were most familiar with Marina Park (only 2% unfamiliar) and the School Playground and Sports Field (only 2% unfamiliar). Tsurita Park and the Disc Golf course received the highest percentage of respondents stating that they ‘never’ used the park, at 65% and 63% respectively. The School Playground and Sports Field and Indian Creek Trail received the highest percentage of ‘Weekly’ use reports, at 28% and 22% respectively.

Question 4: If you do use parks and greenways, approximately how often do you or members of your household use them?

	Never	Yearly	Monthly	Weekly	Don't Know Facility
Dimmick Park	37%	4%	0%	1%	57%
Marina Beach	16%	36%	33%	12%	2%
Event Site	23%	32%	19%	15%	11%
The Hook	34%	27%	20%	9%	9%
Spit	37%	24%	15%	10%	14%
School Playground and Sports Field	17%	24%	30%	28%	2%
Aquatic Center	28%	29%	29%	12%	3%
Indian Creek Trail	24%	25%	24%	22%	6%
Rotary Park - Skate Park	69%	14%	7%	3%	6%
Gibson/Children's Parks	37%	24%	23%	4%	11%
Jackson/Collins/Memorial Parks	10%	40%	35%	10%	5%
Mann Park	38%	7%	3%	3%	50%
Wilson Park	35%	25%	10%	7%	24%
Winan's/Overlook Parks	39%	14%	2%	1%	43%
Panorama Park	27%	57%	6%	2%	8%
Tollbride Park	19%	64%	10%	4%	3%
Ruthton Park	48%	26%	4%	0%	22%
Rouston Park	56%	17%	0%	1%	26%
Kingsley Park	38%	35%	6%	2%	20%
Tucker Park	35%	49%	8%	3%	5%
Oakgrove Park	42%	24%	6%	4%	24%
Waterfront Park	17%	26%	31%	21%	6%
Disc Golf	63%	4%	2%	1%	29%
Tsurita Park	65%	16%	4%	3%	13%
Wacoma Park	55%	11%	5%	1%	28%
Delta (sandbar) Park	46%	18%	9%	7%	20%

Transportation

Most (73%) respondents stated that they drive to parks and trails, while 19% walk and 4% bicycle.

Question 5: If you do use parks and trails, how do you most frequently get to them? (Please check only one.)	
Drive	73%
Walk	19%
Bike	4%
Other	2%
Do Not Use Parks	2%

Written responses for Question 5 include the following relevant responses:

Drive (5): *We live far away (2), would bike if there were lanes, someone takes me, Drive to Tollbridge*

Walk (3): *Walk with others (2), to Indian Creek Trail*

Other (3): *Run Indian Creek, Drive & Walk often, Horseback*

Activities

The least participated-in activities were indoor volleyball (92%), disc golf (91%) and outdoor volleyball (90%), while 90% of respondents indicated that they participate in fairs and festivals at some point in the year, making that the most participated-in activity overall. The most participated-in activities on a weekly-basis were walking for pleasure (54%) and bicycling for pleasure (35%).

Question 6: How often do you or someone in your household participate in the following activities locally? (Please check the appropriate response for each activity.)

	Do Not Participate	Yearly	Monthly	Weekly
Baseball	82%	7%	6%	6%
Basketball	76%	12%	5%	7%
Bicycling (BMX)	84%	4%	4%	8%
Bicycling for Pleasure	32%	14%	19%	35%
Bicycling (commute)	71%	8%	9%	12%
Boating	58%	23%	13%	6%
Camping	32%	48%	18%	2%
Cultural Events (attended)	24%	49%	25%	2%
Disc Golf	91%	5%	3%	2%
Exercising/Aerobics	39%	4%	14%	32%
Fairs and Festivals	10%	66%	20%	4%
Football	83%	11%	4%	2%
Fishing	53%	24%	13%	9%
Hiking	16%	21%	34%	29%
Horseshoes	82%	15%	1%	2%
Instructional Classes	58%	28%	9%	5%
Jogging/Running	49%	5%	13%	34%
Kiteboarding	90%	2%	3%	6%
Kite Flying	80%	15%	3%	2%
Nature Walks	20%	20%	35%	25%
Picnicking	20%	39%	36%	5%
Playground (visit/play)	40%	17%	24%	19%
River Rafting/Kayaking	70%	20%	8%	2%
Rock Climbing	87%	10%	2%	1%
Roller Skating/In-line	86%	9%	4%	1%
Skateboarding	83%	8%	5%	4%
Soccer/La Crosse	71%	9%	5%	15%
Softball	85%	9%	4%	3%
Sports Events (attended)	38%	34%	19%	8%
Swimming (aquatic center)	38%	26%	24%	13%
Swimming (other)	50%	21%	18%	11%

Question 6: How often do you or someone in your household participate in the following activities locally? (Please check the appropriate response for each activity.)				
	Do Not Participate	Yearly	Monthly	Weekly
Tennis	75%	13%	7%	4%
Ultimate Frisbee	89%	6%	2%	3%
Volleyball (indoor)	92%	5%	3%	0%
Volleyball (outdoor/sand)	90%	7%	2%	1%
Walking (pleasure)	12%	8%	22%	58%
Weight Training	62%	6%	10%	22%
Wildlife Viewing	32%	18%	25%	25%
Windsurfing	79%	7%	3%	11%
Other	64%	8%	5%	24%

Responses for “Other” included:

- Golf (3)
- Dog walking/playing (2)
- Mtn. biking!
- Horse riding, dog park
- Bocce
- Yoga
- Stand-up paddling
- Exercise/ Aerobics in the house
- Gardening (every year)
- Ultimate Frisbee (every week)
- Motorcycle riding
- Children’s activities

Aquatic and Recreation Services

A large percentage of respondents were “not sure” if the scope of aquatic center classes and activities meets the needs of the community (45%). However, 47% of respondents believe that the need is met, while 8% believe that it is not.

Question 7: The District currently provides aquatic classes and activities for all ages of residents. Do you feel that the current scope of services offered meets the needs of community?	
Yes	47%
No	8%
Don't Know	45%

When asked whether the District should pursue expanding the District-sponsored recreation services, the expansion of after-school activities received the most support (37% of respondents thought that the District should consider expanding them).

Question 8: Do you think the District should pursue expanding the District-sponsored recreation services?	
After-school activities	37%
Sports leagues	29%
Senior Programs	28%
Special events	24%
Other	15%

Respondents who chose the ‘other’ box were also provided with a line to write in a response. Common responses are grouped into the following categories:

Yes (6): *Yes, with school district programs, in Mt. Hood/Parkdale area, for special needs kids*

No (18): *No, Satisfied as is, not their job, not in this economy, not important*

Not sure/Depends (10): *Don’t know, depends on budget, improve what we have, no taxes*

Suggested Recreation Services (7): *Such as Scuba lessons, Tennis league, Volunteer programs, Some type of specialty program for special needs kids, Horseback riding, water skiing, Health ed, Fun exercise*

Improve Existing Recreation Services (3): *Such as swim lesson hours, Aquatic Center space and service improvements, bus transit from Parkdale to pool.*

Add Park Features (12): *Such as a Dog park, Bikeways, routes or lanes, Walking paths, Better green paths through town, annual parking permit to all parks/sites, Complete the Indian Creek Trail from mouth to headwaters, Huge need for soccer space & for other sports for youth, Tennis courts, Bocce, croquet, Ball fields*

Other (6)

- *Community work parties & picnics to get people involved with taking care of paths*
- *Unaware of current district sponsored services*
- *Culture, family*
- *More physical activities for the community to combat obesity and stress*
- *Alienate young people from drugs*
- *A program for families that do not have a way to pay for transportation*

Park Conditions and Satisfaction

Survey participants were asked about their satisfaction with the condition of specific Hood River Valley Parks and how to improve them. Participants ranked each park, based on a list of parks provided in the survey and then provided written feedback as desired. Key

Appendix D: Public Participation

findings from this data are discussed below grouped by service provider, which is followed by a more complete list of findings and a summary of the written responses.

PORT OF HOOD RIVER

Of the Port's parks, Marina Beach received the highest percentage of satisfaction (48% of respondents stated that they were either very satisfied or satisfied), as well as the highest amount of familiarity (only 24% were unfamiliar with the park). The Event site was the park that received the second highest percent of satisfaction (41% were either very satisfied or satisfied). Delta Park was the least familiar of the Port's parks, with 61% of respondents unfamiliar.

HOOD RIVER COUNTY SCHOOL DISTRICT

The School Playground and Sports Field received high satisfaction (61%). Only 16% of respondents said they "don't know" about these facilities, indicating that they are well known to the community. This is likely because "school playground and sports fields" combines numerous school properties distributed throughout the District into one facility, providing a greater opportunity for familiarity than most single parks included in the question.

HOOD RIVER VALLEY PARKS AND RECREATION DISTRICT

Of the Parks District Facilities, the Aquatic Center received the highest satisfaction (59% either satisfied or very satisfied). The District also assisted with the development of the Disc Golf Course and the Skate Park, both of which were fairly unfamiliar to the community (84% and 57% respectively). Of those who were familiar with these facilities at least half of their responses were satisfactory in nature (satisfied or very satisfied).

CITY OF HOOD RIVER PARKS

Jackson/Collins/Memorial Parks received the highest satisfaction (65% satisfied or very satisfied) as well as the highest level of familiarity (only 16% selected "don't know"). Waterfront Park received the second highest satisfaction of City Parks (55% satisfied or very satisfied).

COUNTY PARKS

Of the county parks, Tollbridge Park received the highest satisfaction (57% satisfied or very satisfied). Panorama Park and Tucker Parks received the second highest satisfaction (42% and 41% respectively). According to the high percentages under the "don't know" column, it appears that many of the County Parks were unfamiliar to a large percentage of respondents.

Question 9: The District would like to know what residents think about the condition of Hood River Valley parks and open spaces/greenways and what would improve them. The following table lists area parks, open spaces and greenways and provides a column to rank the individual facilities. In the ranking column, circle the number that represents your level of satisfaction with these facilities. In the following column you can provide comments about how these facilities can be improved.

	1 - Very Satisfied	2 - Satisfied	3 - Neither	4 - Dissatisfied	5 - Very Dissatisfied	Don't Know
Dimmick Park (county park)	1%	2%	6%	1%	3%	87%
Marina Beach (Port)	17%	31%	20%	4%	5%	24%
Event Site (Port)	15%	26%	16%	4%	3%	36%
The Hook (Port)	8%	20%	24%	7%	2%	39%
Spit (Port)	6%	18%	22%	4%	2%	48%
School Playground and Sports field (School district)	22%	39%	12%	7%	3%	16%
Aquatic Center (Park District)	26%	33%	11%	6%	4%	21%
Indian Creek Trail (Park District)	20%	30%	11%	6%	3%	30%
Rotary Park - Skate Park (Park District)	15%	12%	11%	2%	3%	57%
Gibson/Children's Parks (City)	18%	24%	12%	4%	2%	40%
Jackson/Collins/ Memorial Parks (City)	29%	36%	11%	4%	4%	16%
Mann Park (City)	2%	8%	9%	1%	1%	79%
Wilson Park (City)	8%	19%	16%	4%	1%	52%
Winan's Overlook Parks (City)	5%	7%	7%	1%	1%	79%
Panorama Park (County Park)	16%	26%	20%	4%	4%	30%
Tollbridge Park (County Park)	23%	34%	14%	3%	3%	22%
Ruthton Park (County Park)	3%	15%	17%	2%	1%	61%
Rouston Park (County Park)	2%	9%	13%	3%	1%	72%
Kingsley Park (County Park)	3%	10%	18%	7%	5%	57%
Tucker Park (County Park)	9%	32%	19%	5%	2%	34%
Oakgrove Park (County Park)	6%	18%	13%	4%	1%	59%
Waterfront Park (County Park)	31%	24%	12%	4%	5%	24%
Disc Golf (Park District)	2%	5%	8%	1%	1%	84%
Tsurita Park (City)	12%	18%	16%	4%	1%	48%
Wacoma Park (City)	4%	9%	13%	1%	1%	73%
Delta (sandbar) Park (Port)	6%	13%	16%	1%	2%	61%

Appendix D: Public Participation

OPEN-ENDED RESPONSES

Respondents were provided with a space to leave feedback on each park. The following responses are the most common for each park.

Dimmick Park (County Park)

- *Don't Know About It (6)*
- *This Park is Not Maintained (7)*
- *Could Be a Great Picnic Area (1)*
- *Less grass, more xeriscaping (1)*

Marina Beach (Port)

- *Provide More Maintenance (7)*
- *Allow Kiteboarding/Water skiing (4)*
- *I Like It (3)*
- *Not Safe (3)*

Event Site (Port)

- *Issues with Cleanliness of Grass (4)*
- *Kites Make the Park Unsafe (3)*
- *Too Crowded (2)*
- *It's Well Maintained (2)*

The Hook (Port)

- *Access to Water Should Be Improved (4)*
- *Too Dusty (3)*
- *Needs Road Improvements/Paving (3)*

Spit (Port)

- *Needs Improvements to Road (4)*

School Playground and Sports field (School District)

- *Needs More Sports Courts and Fields (9)*
- *Needs More Maintenance (4)*
- *Overused (2)*
- *Needs More Restrooms (2)*

Aquatic Center (Park District)

- *Needs Expanded Hours (5)*
- *Facilities are Dirty (4)*
- *Not Enough Lanes (3)*
- *Needs More Convenient Hours for Adults (2)*
- *Open the Top More (2)*
- *Too Expensive (2)*
- *Staff Are Unfriendly (2)*
- *Needs a Jacuzzi (2)*

Indian Creek Trail (Park District)

- *Should Be Expanded/Connected (20)*
- *Enjoy Recent Improvements (4)*
- *Issues with Dog Waste (2)*
- *Smells Like Sewage (2)*
- *Needs Better Maintenance (2)*

Rotary Park – Skate Park (Park District)

- *Appreciate Its Usefulness for Kids (3)*

Gibson/Children's Parks (City)

- *Needs Maintenance/Repair (12)*
- *I Like It (3)*

Jackson/Collins/Memorial Parks (City)

- *I Like It (3)*
- *Needs Additional Play Structures (2)*
- *Enjoy Events (2)*

Mann Park (City)

- *Difficult to Locate (3)*
- *Needs Better Equipment (2)*

Wilson Park (City)

- *I Like This Park (4)*
- *Needs Bathroom Facilities (4)*
- *Too Many Bees (2)*
- *Issues With Dog Waste (2)*
- *Too Many Wet Spots (2)*

Winan's/Overlook Parks (City)

- *Beautiful Overlook (2)*

Panorama Park (County park)

- *Beautiful View (7)*
- *Often No Bathroom Access (2)*

Tollbridge Park (County park)

- *Very Nice Place (7)*

Ruthton Park (County park)

- *Feels Unsafe (6)*
- *Issues with Poison Oak (2)*
- *Needs Landscaping (2)*

Rouston Park (County park)

- *Not Clear on How to Camp Here (1)*
- *Camping Should be Free (1)*

Kingsley Park (County park)

- *People Who Use the Park Seem Dangerous/Unsavory (5)*
- *Bathrooms Are Dirty (4)*
- *Too Much Trash (3)*
- *Safety Concerns (2)*
- *Too Loud Because of Bikes (2)*
- *Horrible Place (2)*

Tucker Park (County park)

- *Needs Maintenance (2)*

Oakgrove Park (County park)

- *Enjoy Sand Volleyball (3)*

Waterfront Park (City)

- *I Like This Park (9)*
- *Needs More Maintenance (2)*
- *Needs Off-Leash Area for Dogs (2)*
- *Needs More Play Equipment (2)*

Disc Golf (Park District)

- *Don't Know Where This Is (4)*
- *Needs More Maintenance (4)*

Appendix D: Public Participation

Tsurita Park (City)

- *Beautiful Park (2)*
- *Park Is Unused (3)*
- *Nothing to Do In This Park (2)*

Wacoma Park (City)

- *This Is Not Really a Park (2)*
- *Underutilized (2)*

Delta (sandbar) Park (Port)

- *Sandbar Needs Work/Isn't Always There (5)*
- *This Is Not Really a Park (2)*

Important Features, Facilities and Services

Respondents were questioned about the importance of serving specific populations and including certain features and facilities in the park system.

The population receiving the highest percentage of “important” responses was “families” (87%), with children ages 0-12 very close to that number (86%). “Senior citizens” and “people with disabilities” received the lowest (69%), however none of the responses were significantly lower than the rest. Respondents also indicated that it is very important that parks that are “well-maintained” and “safe” (91% and 89% respectively).

Of the facilities offered as options, “picnic areas” were rated as the most important (81% ranked it as important), while “horseshoe pits” were rated as the least (33% ranked it unimportant). “Playgrounds” and “areas for special events and festivals” was rated the second and third most “important” of the facilities offered (77% and 70% respectively). For trails “Unpaved trails” received the highest percentage of “important” ratings of the trails options provided (65%).

“Soccer and lacrosse” fields received the highest percentage of “important” ratings of the sports fields options provided (61%); “Baseball/softball” was close behind with 58% of respondents listing it as “important.” Of the sports courts, tennis and basketball received the most support at 54% each.

When asked to rate the importance of types of parks, the type of park with the highest percentage of “important” ratings was “Community Parks” (82%); “Mini Parks” received the lowest importance ratings, with only 50% listing it as “important” and 11% listing it as “unimportant.”

Question 10: Please circle the number that best indicates the level of importance for each of the following categories with regard to parks and recreation service in the Hood River Valley. (Circle one response for each item.)

	Important	Neither Un/important	Unimportant	Don't Know
Population Served				
Children (0-12)	86%	9%	2%	4%
Teenagers (13-19)	77%	15%	3%	4%
Adults (20-64)	76%	17%	3%	2%
Senior Citizens (65+)	69%	20%	5%	6%
Families	87%	8%	2%	3%
People with Disabilities	69%	17%	4%	10%
Features				
Close to home or work	58%	33%	7%	2%
Facility is well-maintained	91%	7%	1%	1%
Not crowded	55%	36%	5%	2%
Convenient hours of operation	75%	18%	4%	2%
Safe	89%	8%	1%	1%
Facilities				
Horseshoe pits	19%	39%	33%	8%
River access for swimming/boating	66%	23%	7%	4%
Picnic Areas	81%	15%	2%	2%
Community Center	52%	33%	10%	5%
Community Gardens	44%	39%	13%	4%
Playgrounds	77%	18%	3%	2%
Areas for special events and festivals	70%	21%	5%	3%
Off-leash dog areas	51%	21%	23%	4%
Skatepark	48%	31%	15%	5%
Covered playgrounds/sports courts	56%	27%	12%	4%
Trails				
Paved trails	45%	35%	17%	3%
Unpaved trails	65%	27%	5%	3%

Appendix D: Public Participation

Question 10: Please circle the number that best indicates the level of importance for each of the following categories with regard to parks and recreation service in the Hood River Valley. (Circle one response for each item.)				
	Important	Neither Un/important	Unimportant	Don't Know
Interpretive trails	42%	39%	12%	7%
Sports fields				
Baseball/softball	58%	28%	9%	5%
Football	44%	36%	14%	6%
Soccer/LaCrosse	61%	23%	10%	5%
Sports courts				
Basketball	54%	30%	9%	6%
Racquetball	29%	40%	21%	9%
Tennis	54%	31%	9%	7%
Volleyball	39%	41%	12%	7%
Parks				
Mini parks (2500 sq ft to 1 acre)	50%	32%	11%	7%
Neighborhood parks (1.1 - 5 acres)	76%	16%	4%	4%
Community Parks	82%	11%	3%	4%
Open Space (undeveloped)	58%	25%	10%	7%

Maintenance

Overall, respondents indicated that they were satisfied with the level of park maintenance; 25% of respondents stated that the level of park maintenance was 'excellent' and 63% stated that it was 'good'.

Question 11: How would you rate your overall satisfaction with the level of park maintenance?	
Excellent	25%
Good	63%
Fair	11%
Poor	1%

Additional Parks

A total of 49% of respondents believe that the Hood River Valley Parks and Recreation District needs new parks.

Question 12: Do you think the Hood River Valley Park and Recreation District needs, or does not need, additional parks?	
Needs	49%
Does NOT Need	32%
Don't Know	19%

Respondents were asked in an open-ended question what type of parks and facilities they would like to see. Many of the responses were requests for park features that may not necessarily require additional parkland, but could be included in existing parkland. Common responses were grouped into the following categories:

Open & Green Field (9): *Left natural, with interpretive items & art, similar to Westside Elementary or Sorosis Park in the Dalles*

Trails (34): *More connectivity, complete/expand Indian Creek Trail, Hiking/running/walking/biking trails, through natural areas, cyclocross training, interpretive trails, wheelchair accessible*

Sports (51): *Sports fields (15), Soccer/lacrosse (10), Tennis Courts (5), Sports Complex (4), Basketball (4), Baseball/softball (2), Little League Facility (2), All weather surface (2), lacrosse, Volleyball (2), Indoor Sports Fields, Boxing*

Dog Park (25): *Dog park (12), Off leash dog areas (10), Dog Walk Parks, Obstacle course for dogs, Dog park at waterfront area*

Play Facilities (7): *Playgrounds (3), Playgrounds for small children (2), Water Play Feature (2)*

Park Improvements (27): *Picnic Areas/facilities (10), Restrooms (7), Camping (2), Accessible Benches with View (2), Lights, Open Space, Horse Trails, Water Access for Water Skiing/advanced windsurfers/kiteboarding, fitness equipment, Drive-in, amphitheater, plaza, Community Garden (2), Water Fountain (2), Space to Feed Ducks*

New Facilities (14): *skate park in Odell, indoor ice rink, rock climbing, more neighborhood parks (3), Barrett Park developed, parks at waterfront, picnic/event area in upper valley, Community Park, Multi-purpose parks, River Access, Purchase Golf Course, Community Center, develop Nichols Boat works Site.*

User Groups (21): *Space/toys for young children (10), Family Oriented/friendly (7), teens, older people, all ages (2)*

Location Specific Comments (9): *In neighborhoods (2), Pool/parks in upper valley (2), At Columbia waterfront, Westside HR, In outlying areas, Odell, Parkdale*

Appendix D: Public Participation

Other (20): *Don't need more (3), places for exercise (3), improving existing (2), continue building (2), Don't know,* Of the 49% of respondents who believed that more parks were needed, 25% of them believed that those extra parks should be located in Hood River, while 24% believed that they should be located on the Westside of Hood River and 23% believed that they should be located in Odell.

Question 14: If you think the District needs additional parks, where should they be located? Please check all the areas of the County in which you think new parks should be located.

Hood River	25%
Westside of Hood River	24%
Odell	23%
Parkdale	19%
Eastside of Hood River	13%
Other	8%

Other responses for this question included:

Near/Along Water (7)

- *River access dog park (2), Along the Hood River from north to Tucker Park, Port, Waterfront, More lakes, Koberg's Beach*

Specific Location/Community (4): Hood River, Odell, the Heights & Barrett Park

- *Biking/walking loops around H.R. and S. to Odell/Parkdale; Odell – is there more/new opportunities for rec at county fairgrounds?; The Heights; A dog park as part of new 34 acre park on Barrett*

No Specific Location or None (5)

- *I say HR because that is most convenient for me. Any new parks in any localities are welcome – especially w/tennis courts*
- *Anywhere that space can be found/claimed before it's all filled up*
- *Where they are needed – I don't have a complete overview of the park/rec system*
- *Long trails connecting all the great areas*
- *Use existing parks, no need to spend funds to create another park for tourists*

FUNDING PRIORITIES

Participants were then asked to divide a hypothetical \$100 dollars between a number of categories. Overall, “maintenance and improvements to existing facilities” averaged the highest amount of money (\$31).

Question 15: If you had \$100 to spend on parks in the District, how would you divide it among the following categories?	
Maintenance and Improvements to Existing Facilities	\$31
Additional Trails	\$19
Additional Sports Facilities/Fields	\$15
Additional Play Structures	\$8
Additional Natural Areas	\$8
Additional Community Parks (5.1 - 25 acres)	\$6
Additional Neighborhood Parks (1.1 acres - 6 acres)	\$6
Other	\$4
Additional Mini-Parks (2,500 sq. ft to 1 acre)	\$3

Common comments for “Other” included: *Develop a Dog Park (6), Spend None (3), Spend only Partial (2), and the following additional recommendations:*

Other \$0-50 (7): *Pool Improvements (3), Activities, Community Rec Center, Cover Wilson Structure, Community Garden Plots*

Other \$51-100 (7): *Trail improvements (2), Skate park in Odell & Parkdale, Aquatic Center Improvements, Natural Areas, Cover Tennis Courts, Bocce*

Appendix D: Public Participation

Barrett Park

Respondents were asked about changes to the facilities they would like to see at Barrett Park; 52% of respondents would like to see a picnic shelter and 47% would like to see trails.

Question 16: If zoning restrictions change in the future, what types of facilities would you prefer to be included at Barrett Park? (Check all that apply)	
Picnic shelter	52%
Trails	47%
Sports fields	39%
Play structures	35%
Open play fields	34%
Fenced play area for dogs	28%
Model aircraft takeoff and landing	13%
Other	14%

Common Responses for “Other” related to including the following topics:

Dog Parks (4)

Sports Facilities (13): *such as Frisbee Golf, Tennis, Basketball, and fitness loop*

Park Features (17): *such as Water Play, bathrooms, horseshoes, Gathering space, model aircraft takeoff, seating, open space, arboretum, community garden, pond, parking & bocce*

Bike paths & trails (9): *such as bike/walking/wheelchair accessible paths, Indian Ck Trail connection, mountain bike course*

None (13): *None of the above, Leave it like it is, Don't need it – can't afford it, Maintain what you already have, sell it, return to farmland, and No playground, sports fields, or picnic shelters*

Other (10)

- *Natural areas w/native plant restoration (2)*
- *Don't use*
- *I'm not familiar with this park*
- *I don't know enough about this option*
- *Great spot for family use*
- *Something that will not reduce the value of the neighbor's property & be noisy to those property owners*
- *Should not have been purchased (before finding restrictions)*
- *Depends on initial & maintenance costs. Maybe you could develop an area that attracts regional competitions?*
- *Something different!*

When asked whether they would be willing to pay a day-use fee should facilities be added, only 34% of respondents said 'yes'. A large number also stated that 'it depends' (27%).

Question 17: Would you be willing to pay a day-use fee of less than \$5.00 if the facilities you listed above were provided at Barrett Park?	
Yes	34%
No	38%
It Depends	27%

Written responses for this question indicate just as much indecision over this issue. Common responses are included under the following categories major categories:

Yes to an annual fee/membership/day use fee of some sort(22)

Yes to certain park use (14): *Such as for sport uses, large gathering space/events, tennis, aircraft, camping, community garden plots.*

No for certain uses (7): *Such as for trails, playgrounds, open space, and sports fields.*

Other Options/Suggestions (5): *Would rather pay taxes; make windsurfers/kiteboarders pay; tax bikers, golfers, & jet boaters; make sports leagues pay; make visitors pay*

Depends on quality & facilities & services (19): *Depends on Quality & type of park (13), level of maintenance, & how good facilities are.*

No/Not a good idea (18): *Already taxed, limits low income, too many other options, would limit my visits, poor economy, too many fees already, not a fan of fees, most parks don't charge, will cost more to collect fee, not for short visits.*

Other (5): *Not close to me, not sure, I don't use parks, only on occasion*

Open-Ended Responses

Finally, respondents were provided with space for any other comments that they would like to provide to HRVPRD. The most commonly mentioned comments were:

Trails

- *We need more walking trails (11)*
- *We need more bike lanes, paths and trails (13)*
- *Finish ICT (8)*
- *We need horse trails (3)*

Appreciations

- *Thanks for your work, the parks are great! (11)*
- *Our parks are improving (4)*

Appendix D: Public Participation

- *I love the Children's Beach (2)*
- *I love the aquatic center (2)*

New Parkland

- *If you build new parks, it is most important that they are accessible by foot and bike (9)*
- *I would like to see more trails and parks next to the river (7)*
- *Even if you have money to spend, now it not an appropriate time to do so (keep it, give it to the city, return it to citizens) (7)*
- *We need a park specifically for toddlers (2)*
- *Develop more space for kiting (2)*
- *Improve the current parks, rather than develop new ones (3)*
- *No new parks at all (2)*

Concerns

- *No new taxes (5)*
- *The purchase of the land meant for Barrett Park was a bad decision (5)*
- *Please be careful of overdeveloping, we need space for natural areas too (3)*
- *There is no service for people who live outside of town (2)*
- *Improve the Aquatic Center (2)*
- *The men's showers at the Aquatic Center need work (2)*

Park Features

- *We need a baseball or softball field (5)*
- *We need a dog park (5)*
- *We need more sports fields (3)*
- *Need more tennis courts (3)*
- *We need more benches and tables (2)*
- *We need more soccer fields (2)*
- *Develop an indoor facility (2)*

Park Funding

- *It's ok to charge user fees (5)*
- *Tax visitors to the area or make them pay to use the parks (3)*
- *Ask community members to volunteer to maintain parks (3)*

General Comments & Opinions

- *It is most important to maintain the parks (7)*
- *Parks are used by visitors and tourists (4)*